

## NWCA-10-1 WR-10 to 1.0mm

Features:  
\* Low VSWR

Applications:  
\* Wireless  
\* Transmitter  
\* Laboratory Test  
\* Radar

### Electrical

Frequency:	75~110GHz
VSWR:	1.4 max.
Insertion Loss:	1.3dB max.
Impedance:	50Ω

### Mechanical

RF Connectors:	1.0mm
Interface:	WR-10
Flange:	UG-387/U
Material:	Gold plated brass
Outer Conductor:	Passivated stainless steel
Dielectric:	PE
Inner Conductor:	Gold plated beryllium copper

### How To Order

#### NWCA-10-X-Y

X: Connector type.

Y: End launch: E, Right angle: R.

Connector naming rules:

1 - 1.0mm Male (Outline A)

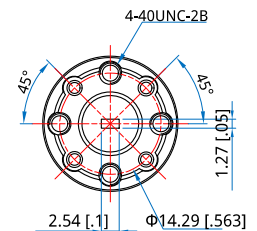
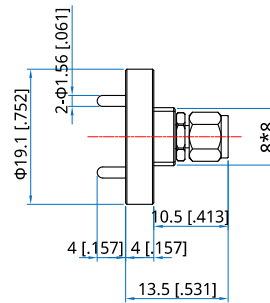
1F - 1.0mm Female (Outline B)

Examples:

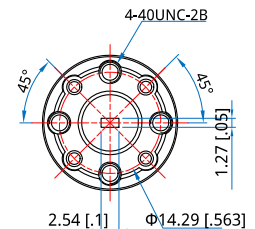
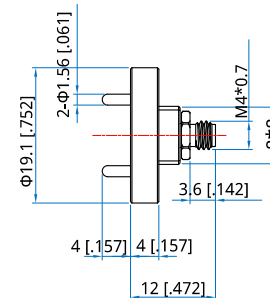
To order a waveguide to coax adapter, WR-10 to 1.0mm female, end launch, specify NWCA-10-1F-E.

Customization is available upon request.

### Outline Drawings



Outline A



Outline B

Unit: mm [in]

Tolerance: ±0.2mm [±0.008in]

## NWCA-102-SF-R

WR-102 to SMA female, Right angle

Waveguide to Coax Adapter

Features:  
\* Low VSWR

Applications:  
\* Wireless  
\* Transmitter  
\* Laboratory Test  
\* Radar

### Electrical

Frequency: 7~11GHz  
VSWR: 1.3 max.  
Insertion Loss: 0.3dB max.

### Mechanical

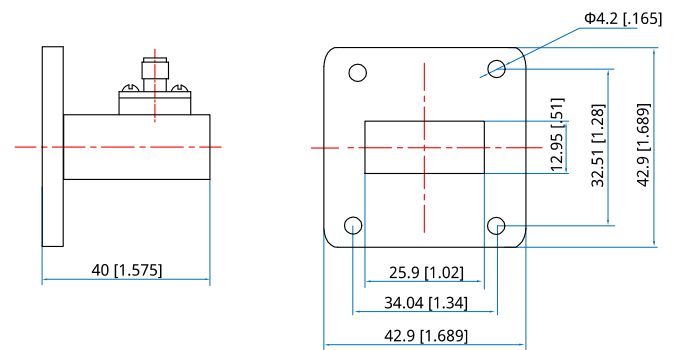
RF Connectors: SMA Female  
Interface: WR-102  
Flange: Custom  
Material: Aluminum

### How To Order

**NWCA-102-SF-R**

Customization is available upon request.

### Outline Drawings



Unit: mm [in]

Tolerance:  $\pm 0.2\text{mm}$  [ $\pm 0.008\text{in}$ ]



## NWCA-112-NF-E WR-112 to N female, End launch

Features:  
\* Low VSWR

Applications:  
\* Wireless  
\* Transmitter  
\* Laboratory Test  
\* Radar

### Electrical

Frequency: 6.57~9.99GHz  
VSWR: 1.2 max.  
Impedance: 50Ω

### Mechanical

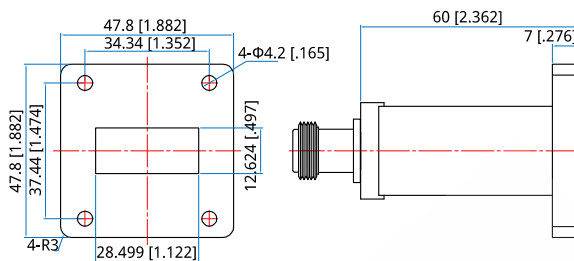
Length: 60mm  
2.362in  
RF Connectors: N Female  
Interface: WR-112  
Flange: FBP84 or FDP84  
Material: Aluminium

### How To Order

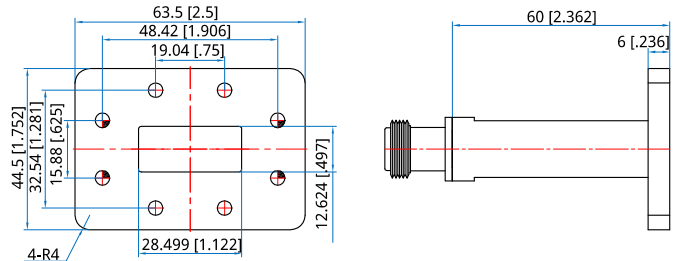
**NWCA-112-NF-E-B - Outline A**  
**NWCA-112-NF-E-D - Outline B**

Customization is available upon request.

### Outline Drawings



Outline A



Outline B

Unit: mm [in]      Tolerance: ±0.2mm [±0.008in]

## NWCA-112-NF-R WR-112 to N female, Right angle

Features:  
\* Low VSWR

Applications:  
\* Wireless  
\* Transmitter  
\* Laboratory Test  
\* Radar

### Electrical

Frequency: 6.57~9.99GHz  
VSWR: 1.2 max.

### Mechanical

RF Connectors: N Female  
Interface: WR-112  
Material: Aluminum

### Environmental

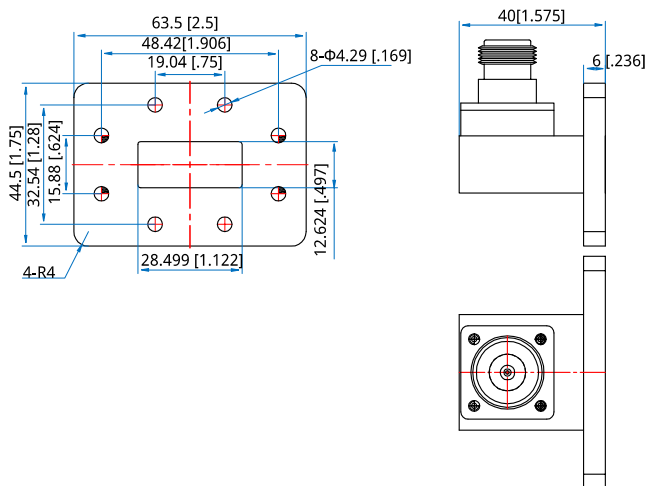
Temperature: -20~+65°C

### How To Order

**NWCA-112-NF-R**

Customization is available upon request.

### Outline Drawings



Unit: mm [in]

Tolerance: ±0.2mm [±0.008in]

## NWCA-112-SF-E WR-112 to SMA female, End launch

Features:  
\* Low VSWR

Applications:  
\* Wireless  
\* Transmitter  
\* Laboratory Test  
\* Radar

### Electrical

Frequency: 6.57~9.99GHz  
VSWR: 1.2 max.  
Impedance: 50Ω

### Mechanical

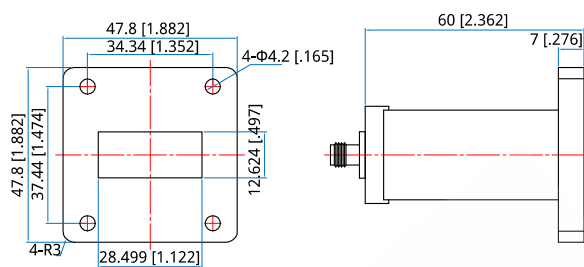
Length: 60mm  
2.362in  
RF Connectors: SMA Female  
Interface: WR-112  
Flange: FBP84 or FDP84  
Material: Aluminium

### How To Order

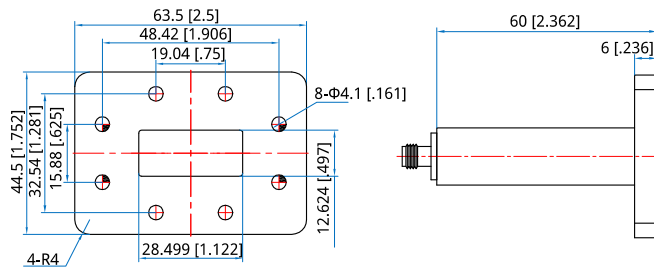
**NWCA-112-SF-E-B - Outline A**  
**NWCA-112-SF-E-D - Outline B**

Customization is available upon request.

### Outline Drawings



Outline A



Outline B

Unit: mm [in]

Tolerance: ±0.2mm [±0.008in]

## NWCA-112-SF-R WR-112 to SMA female, Right angle

- \* Transmitter
- \* Laboratory Test
- \* Radar

### Electrical

Frequency: 6.57~9.99GHz  
VSWR: 1.2 max.  
Impedance: 50Ω

### How To Order

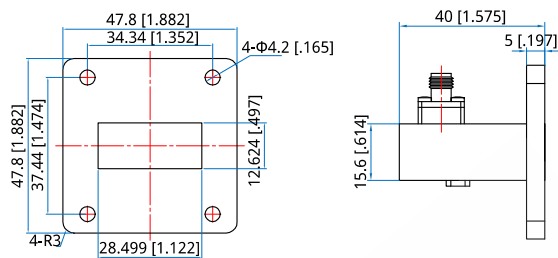
**NWCA-112-SF-R-B - Outline A**  
**NWCA-112-SF-R-D - Outline B**

### Mechanical

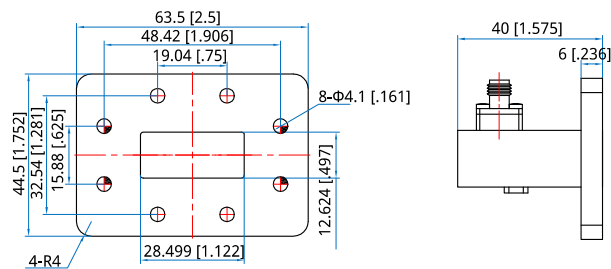
Length: 40mm  
1.575in  
RF Connectors: SMA Female  
Interface: WR-112  
Flange: FBP84 or FDP84  
Material: Aluminium

Customization is available upon request.

### Outline Drawings



Outline A



Outline B

Unit: mm [in]      Tolerance: ±0.2mm [±0.008in]

## NWCA-1150-NF-R WR-1150 to N female, Right angle

### Features:

- \* Low VSWR

### Applications:

- \* Wireless
- \* Transmitter
- \* Laboratory Test
- \* Radar

### Electrical

Frequency: 0.64~0.98GHz  
VSWR: 1.2 max.  
Impedance: 50Ω

### How To Order

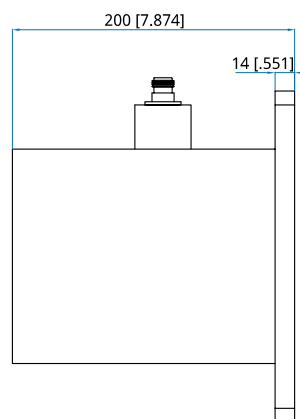
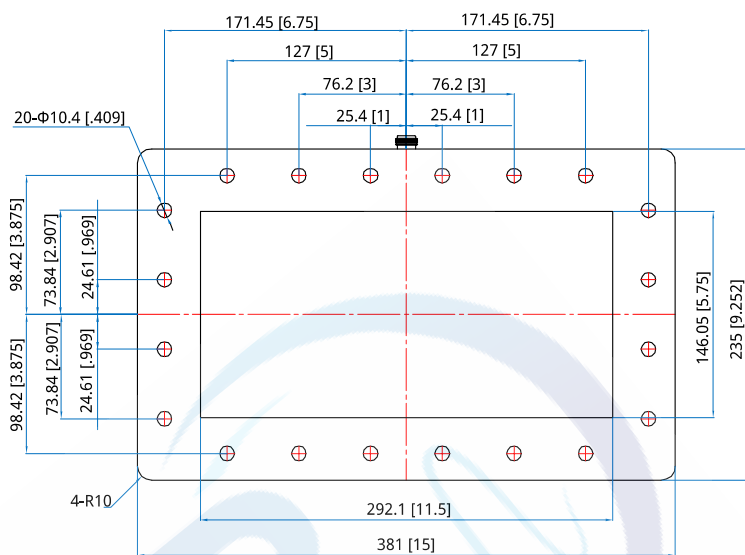
**NWCA-1150-NF-R**

Customization is available upon request.

### Mechanical

Length: 200mm  
7.874in  
RF Connectors: N Female  
Interface: WR-1150  
Flange: FDP8  
Material: Aluminium

### Outline Drawings



Unit: mm [in]

Tolerance: ±0.2mm [±0.008in]

# NWCA-12-1

## WR-12 to 1.0mm

Features:  
\* Low VSWR

Applications:  
\* Wireless  
\* Transmitter  
\* Laboratory Test  
\* Radar

### Electrical

Frequency:	60~90GHz
VSWR:	1.35 max.
Insertion Loss:	1.1dB max.
Impedance:	50Ω

### Mechanical

RF Connectors:	1.0mm
Interface:	WR-12
Flange:	UG-387/U
Material:	Gold plated brass
Outer Conductor:	Passivated stainless steel
Dielectric:	PE
Inner Conductor:	Gold plated beryllium copper

### Environmental

Temperature:	-55~+60°C
--------------	-----------

### How To Order

NWCA-12-X-Y

X: Connector type.

Y: End launch: E, Right angle: R.

Connector naming rules:

1F - 1.0mm Female (Outline A)

1 - 1.0mm Male (Outline B)

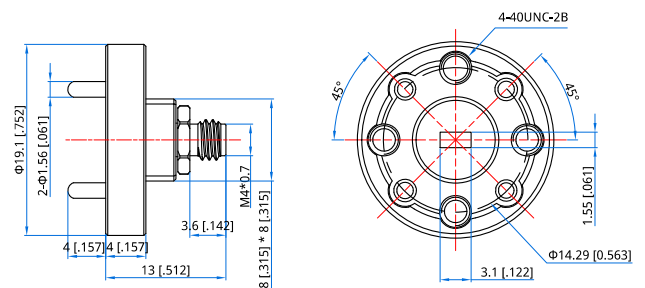
Examples:

To order a waveguide to coax adapter, WR-12 to 1.0mm female, end launch, specify NWCA-12-1F-E.

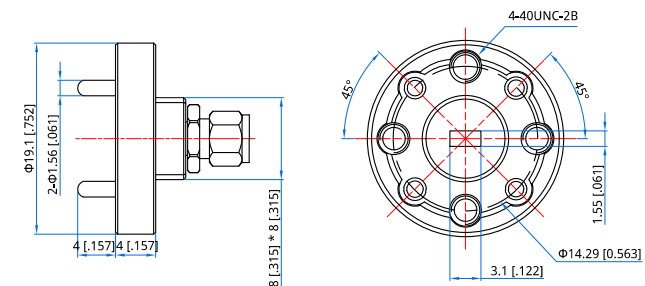
Customization is available upon request.

## Waveguide to Coax Adapters

### Outline Drawings



Outline A



Outline B

Unit: mm [in]

Tolerance: ±0.2mm [±0.008in]

## NWCA -1' + -NF -E WR-137 to N female, End launch

Features:  
\* Low VSWR

Applications:  
\* Wireless  
\* Transmitter  
\* Laboratory Test  
\* Radar

### Electrical

Frequency: 5.38~8.17GHz  
VSWR: 1.2 max.

### Mechanical

RF Connectors: N female  
Interface: WR-137  
Flange: FDP70  
Material: Aluminum

### Environmental

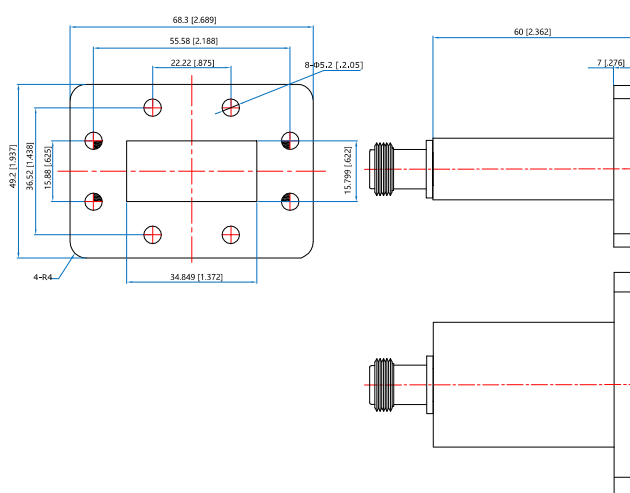
Temperature: -20~+65°C

### How To Order

**NWCA-137-NF-E**

Customization is available upon request.

### Outline Drawings



Unit: mm [in]

Tolerance: ±0.2mm [±0.008in]

## NWCA-1' + -NF -R WR-137 to N female, Right angle

Features:  
\* Low VSWR

Applications:  
\* Wireless  
\* Transmitter  
\* Laboratory Test  
\* Radar

### Electrical

Frequency: 5.37~8.17GHz  
VSWR: 1.2 max.

### Mechanical

RF Connectors: N female  
Interface: WR-137  
Flange: FDP70  
Material: Aluminum

### Environmental

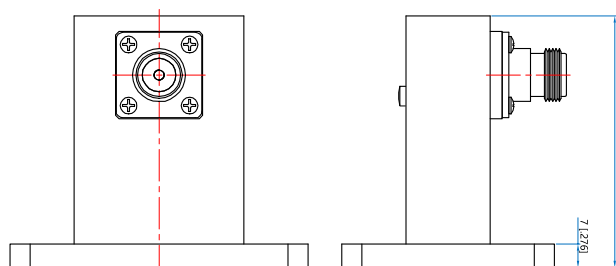
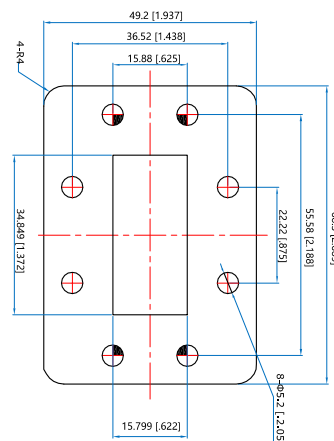
Temperature: -20~+65°C

### How To Order

**NWCA-137-NF-R**

Customization is available upon request.

### Outline Drawings



Unit: mm [in]

Tolerance:  $\pm 0.2\text{mm}$  [ $\pm 0.008\text{in}$ ]



## NWCA-1' + -SF -E WR-137 to SMA female, End launch

Features:  
\* Low VSWR

Applications:  
\* Wireless  
\* Transmitter  
\* Laboratory Test  
\* Radar

### Electrical

Frequency: 5.37~8.17GHz  
VSWR: 1.2 max.  
Impedance: 50Ω

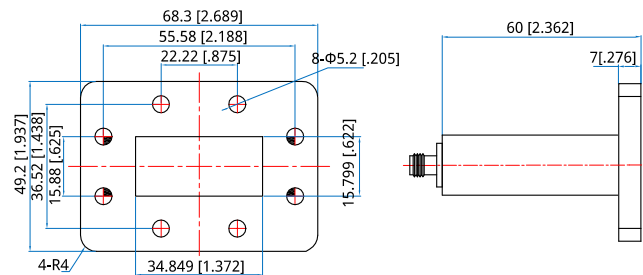
### Mechanical

Length: 60mm  
2.362in  
RF Connectors: SMA Female  
Interface: WR-137  
Flange: FDP70  
Material: Aluminium

### How To Order NWCA-137-SF-E

Customization is available upon request.

### Outline Drawings



Unit: mm [in]

Tolerance:  $\pm 0.2\text{mm}$  [ $\pm 0.008\text{in}$ ]

## NWCA-1' +-SF-R WR-137 to SMA Female, Right angle

Features:  
\* Low VSWR

Applications:  
\* Wireless  
\* Transmitter  
\* Laboratory Test  
\* Radar

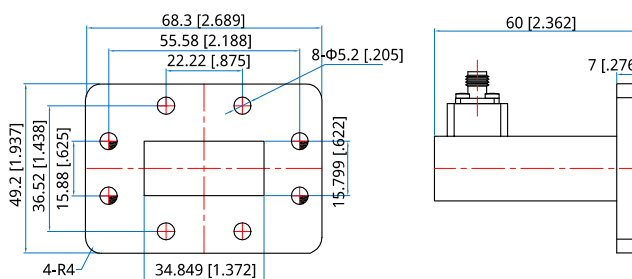
### Electrical

Frequency: 5.37~8.17GHz  
VSWR: 1.2 max.  
Impedance: 50Ω

### Mechanical

Length: 60mm  
2.362in  
RF Connectors: SMA female  
Interface: WR-137  
Flange: FDP70  
Material: Aluminum

### Outline Drawings



Unit: mm [in]

Tolerance: ±0.2mm [±0.008in]

### How To Order

**NWCA-137-SF-R**

Customization is available upon request.

## NWCA-1500-NF-R WR-1500 to N female, Right angle

Features:  
\* Low VSWR

Applications:  
\* Wireless  
\* Transmitter  
\* Laboratory Test  
\* Radar

### Electrical

Frequency: 0.49~0.75GHz  
VSWR: 1.2 max.  
Impedance: 50Ω

### How To Order

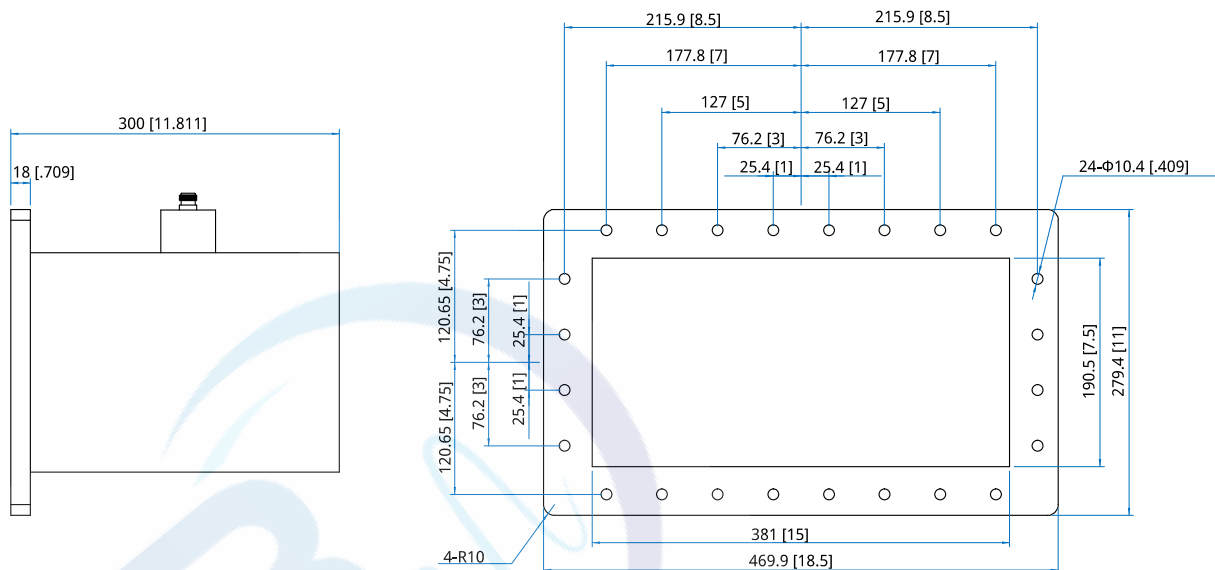
**NWCA-1500-NF-R**

Customization is available upon request.

### Mechanical

Length: 300mm  
11.811in  
RF Connectors: N Female  
Interface: WR-1500  
Flange: FDP6  
Material: Aluminium

### Outline Drawings



Unit: mm [in] Tolerance: ±0.2mm [±0.008in]

NWCA-15-1  
WR-15 to 1.0mm

Features:  
\* Low VSWR

Applications:

- \* Wireless
- \* Transmitter
- \* Laboratory Test
- \* Radar

## Electrical

Frequency:	50~75GHz
VSWR:	1.35 max.
Insertion Loss:	0.8dB max.
Impedance:	50Ω

## Mechanical

RF Connectors:	1.0mm
Interface:	WR-15
Flange:	UG-385/U
Material:	Gold plated brass
Outer Conductor:	Passivated stainless steel
Dielectric:	CPS
Inner Conductor:	Gold plated beryllium copper

## How To Order

## NWCA-15-X-Y

X: Connector type.

Y: End launch: E, Right angle: R.

### Connector naming rules:

1F - 1.0mm Female (Outline A)

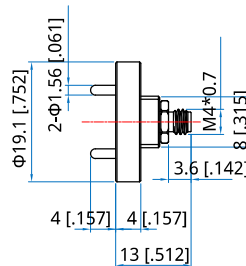
1 - 1.0mm Male (Outline B)

Examples:

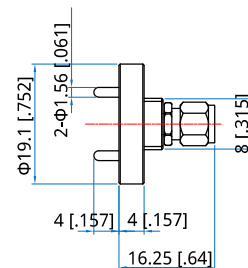
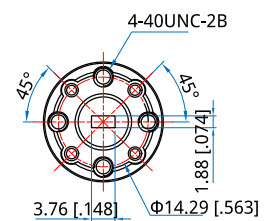
To order a waveguide to coax adapter, WR-15 to 1.0mm male, end launch, specify NWCA-15-1-E.

Customization is available upon request.

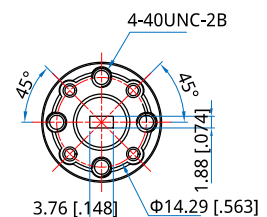
## Outline Drawings



## Outline A



## Outline B



Unit: mm [in]

Tolerance:  $\pm 0.2\text{mm}$  [ $\pm 0.008\text{in}$ ]

NWCA-15- -NF-E  
WR-159 to N female, End launch

### Features:

\* Low VSWR

Applications:

- \* Wireless
- \* Transmitter
- \* Laboratory Test
- \* Radar

## Electrical

Frequency: 4.64~7.05GHz  
VSWR: 1.2 max.  
Impedance: 50Ω

## How To Order

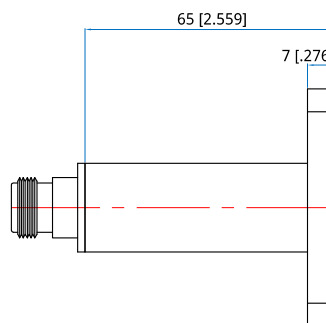
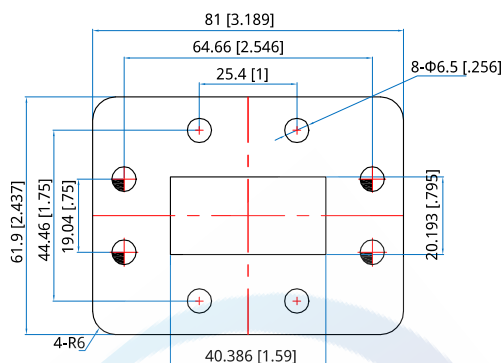
NWCA-159-NF-E

Customization is available upon request.

## Mechanical

Length:	65mm
	2.559in
RF Connectors:	N Female
Interface:	WR-159
Flange:	FDP58
Material:	Aluminium

## Outline Drawings



Unit: mm [in]

Tolerance:  $\pm 0.2\text{mm}$  [ $\pm 0.008\text{in}$ ]

## NWCA-15- -NF-R WR-159 to N female, Right angle

Features:  
\* Low VSWR

Applications:  
\* Wireless  
\* Transmitter  
\* Laboratory Test  
\* Radar

### Electrical

Frequency: 4.64~7.05GHz  
VSWR: 1.2 max.

### Mechanical

RF Connectors: N Female  
Interface: WR-159  
Flange: FDP70  
Material: Aluminum

### Environmental

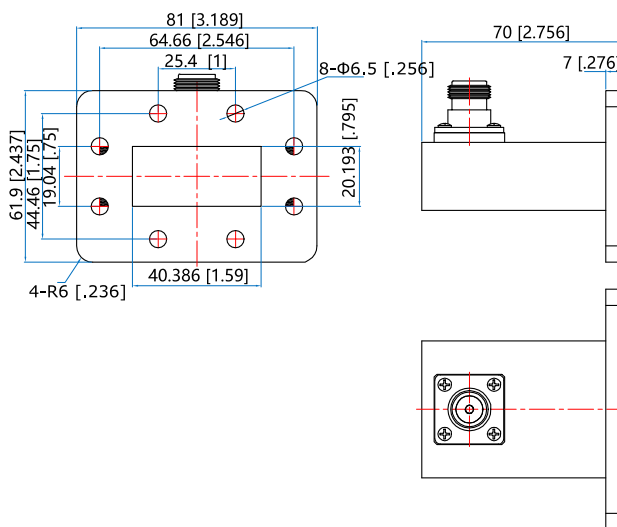
Temperature: -20~+65°C

### How To Order

**NWCA-159-NF-R**

Customization is available upon request.

### Outline Drawings



Unit: mm [in]

Tolerance: ±0.2mm [±0.008in]

NWCA-15- -SF-E  
WR-159 to SMA female, End launch

### Features:

\* Low VSWR

Applications:

- \* Wireless
- \* Transmitter
- \* Laboratory Test
- \* Radar

## Electrical

Frequency:	4.64~7.05GHz
VSWR:	1.2 max.
Impedance:	50Ω

## How To Order

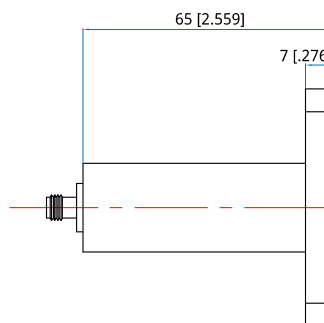
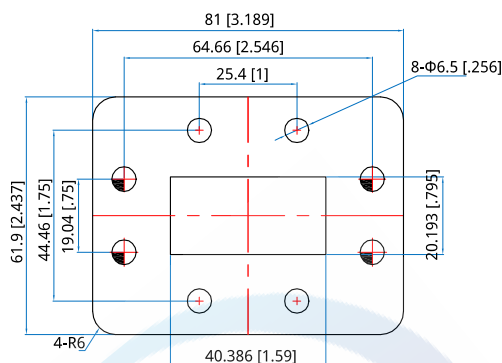
NWCA-159-SF-E

Customization is available upon request.

## Mechanical

Length:	65mm 2.559in
RF Connectors:	SMA Female
Interface:	WR-159
Flange:	FDP58
Material:	Aluminium

## Outline Drawings



Unit: mm [in]

Tolerance:  $\pm 0.2\text{mm}$  [ $\pm 0.008\text{in}$ ]

## NWCA-15- -SF-R

### WR-159 to SMA female, Right angle

Features:  
\* Low VSWR

Applications:  
\* Wireless  
\* Transmitter  
\* Laboratory Test  
\* Radar

#### Electrical

Frequency: 4.64~7.05GHz  
VSWR: 1.2 max.  
Impedance: 50Ω

#### How To Order

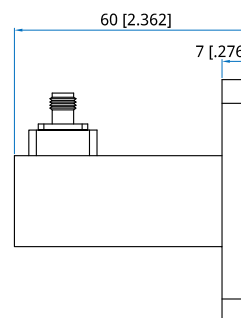
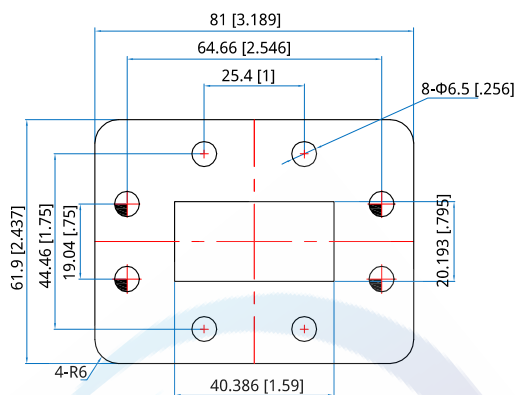
**NWCA-159-SF-R**

Customization is available upon request.

#### Mechanical

Length: 60mm  
2.362in  
RF Connectors: SMA Female  
Interface: WR-159  
Flange: FDP58  
Material: Aluminium

#### Outline Drawings



Unit: mm [in] Tolerance: ±0.2mm [±0.008in]



## NWCA-15-J F-R

### WR-15 to 1.85mm Female, Right Angle

Features:  
\* Low VSWR

Applications:  
\* Wireless  
\* Transmitter  
\* Laboratory Test  
\* Radar

#### Electrical

Frequency: 50~67GHz  
VSWR: 1.3 max.  
Impedance: 50Ω  
Insertion Loss: 0.6dB max.

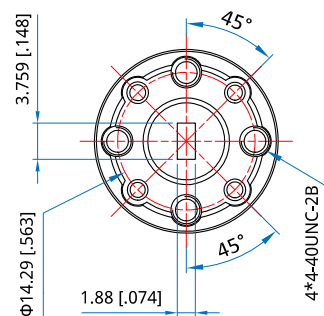
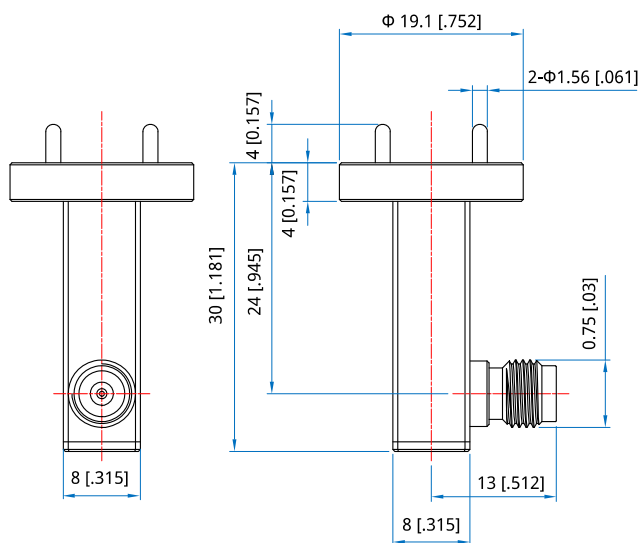
#### Mechanical

Length: 30mm  
1.181in  
RF Connectors: 1.85mm Female  
Interface: WR-15  
Material: Gold Plated Brass  
Outer Conductor: SUS303 Stainless Steel  
Dielectric: PE  
Inner Conductor: Gold Plated Beryllium Copper

#### Environmental

Temperature: -55~+125°C

#### Outline Drawings



Unit: mm [in]  
Tolerance: ±0.2mm [±0.008in]

How To Order  
**NWCA-15-VF-R**

Customization is available upon request.

## NWCA-15-J -R

### WR-15 to 1.85mm Male, Right Angle

Features:  
\* Low VSWR

Applications:  
\* Wireless  
\* Transmitter  
\* Laboratory Test  
\* Radar

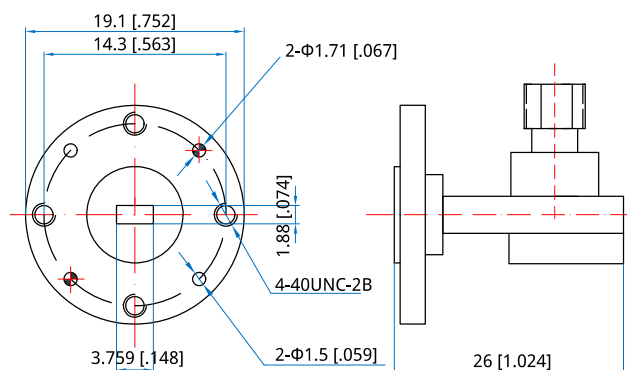
#### Electrical

Frequency: 50~75GHz  
VSWR: 1.8 max.  
Insertion Loss: 1dB max.

#### Mechanical

Length: 26mm  
1.024in  
RF Connectors: 1.85mm Male  
Interface: WR-15  
Flange: UG385/U

#### Outline Drawings



Unit: mm [in]  
Tolerance:  $\pm 0.2\text{mm}$  [ $\pm 0.008\text{in}$ ]

#### How To Order

#### NWCA-15-V-R

Customization is available upon request.

## NWCA -1, OO-N F -R

### WR-1800 to N female, Right angle

Features:  
\* Low VSWR

Applications:  
\* Wireless  
\* Transmitter  
\* Laboratory Test  
\* Radar

#### Electrical

Frequency: 0.41~0.62GHz  
VSWR: 1.2 max.  
Impedance: 50Ω

#### How To Order

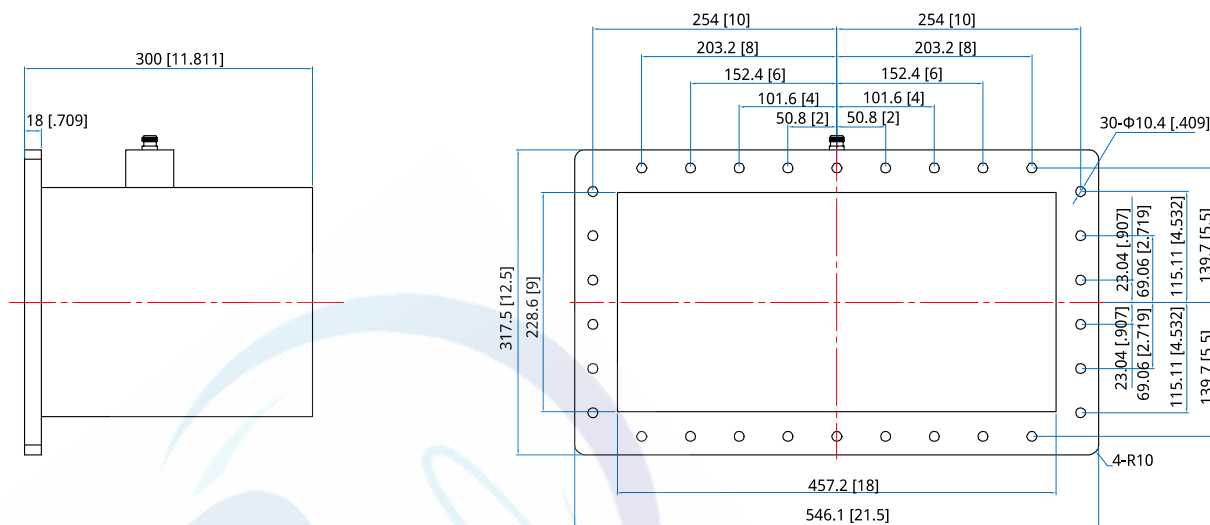
**NWCA-1800-NF-R**

Customization is available upon request.

#### Mechanical

Length: 300mm  
11.811in  
RF Connectors: N Female  
Interface: WR-1800  
Flange: FDP5  
Material: Aluminium

#### Outline Drawings



Unit: mm [in] Tolerance: ±0.2mm [±0.008in]

NWCA-1, +--+F-R

WR-187 to 7/16 DIN female, Right angle

Features:  
\* Low VSWR

Applications:  
\* Wireless  
\* Transmitter  
\* Laboratory Test  
\* Radar

## Electrical

Frequency: 3.95~5.85GHz  
VSWR: 1.2 max.  
Impedance: 50Ω

## How To Order

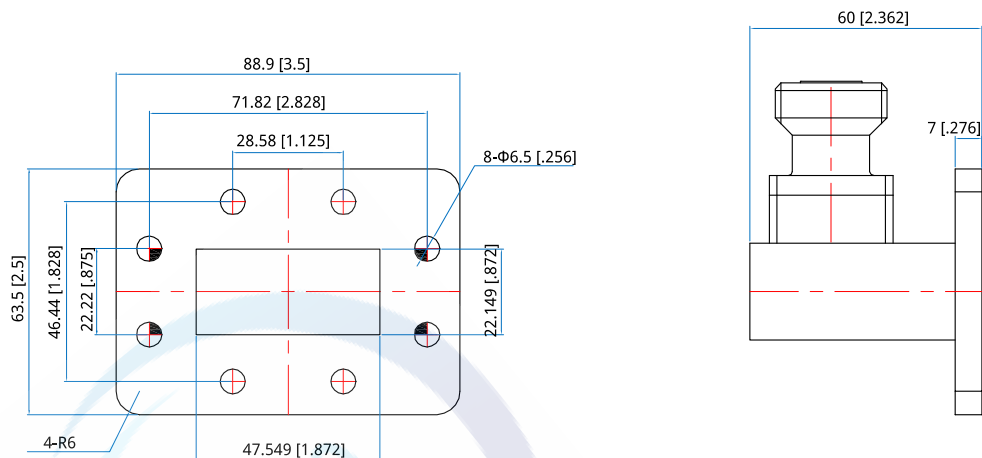
**NWCA-187-7F-R**

Customization is available upon request.

## Mechanical

Length: 60mm  
2.362in  
RF Connectors: 7/16 DIN Female  
Interface: WR-187  
Flange: FDP48  
Material: Aluminium

## Outline Drawings



Unit: mm [in]

Tolerance: ±0.2mm [±0.008in]

NWCA -1, +-NF -E

WR-187 to N female, End launch

## Features:

\* Low VSWR

## Applications:

\* Wireless  
\* Transmitter  
\* Laboratory Test  
\* Radar

## Electrical

Frequency: 3.94~5.99GHz  
VSWR: 1.2 max.  
Impedance: 50Ω

## How To Order

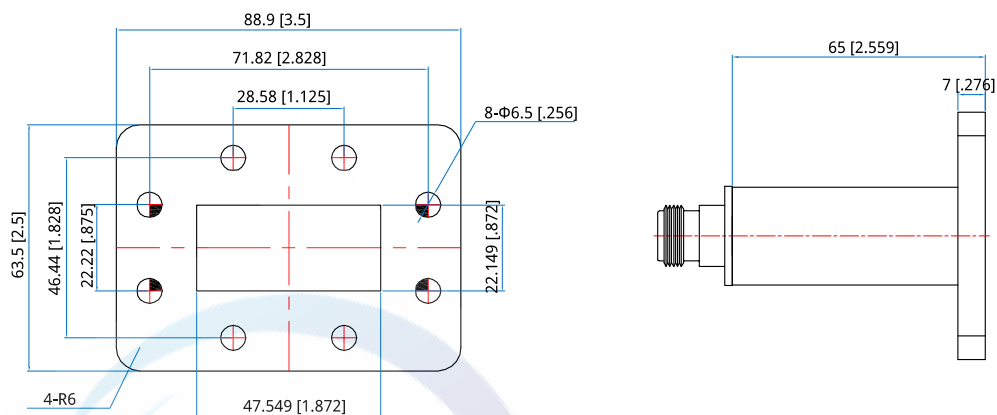
**NWCA-187-NF-E**

Customization is available upon request.

## Mechanical

Length: 65mm  
2.559in  
RF Connectors: N Female  
Interface: WR-187  
Flange: FDP48  
Material: Aluminium

## Outline Drawings



Unit: mm [in]

Tolerance:  $\pm 0.2\text{mm}$  [ $\pm 0.008\text{in}$ ]

## NWCA -1, +-NF -R WR-187 to N female, Right angle

Features:  
\* Low VSWR

Applications:  
\* Wireless  
\* Transmitter  
\* Laboratory Test  
\* Radar

### Electrical

Frequency: 3.94~5.99GHz  
VSWR: 1.2 max.

### Mechanical

RF Connectors: N Female  
Interface: WR-187  
Flange: FDP48  
Material: Aluminum

### Environmental

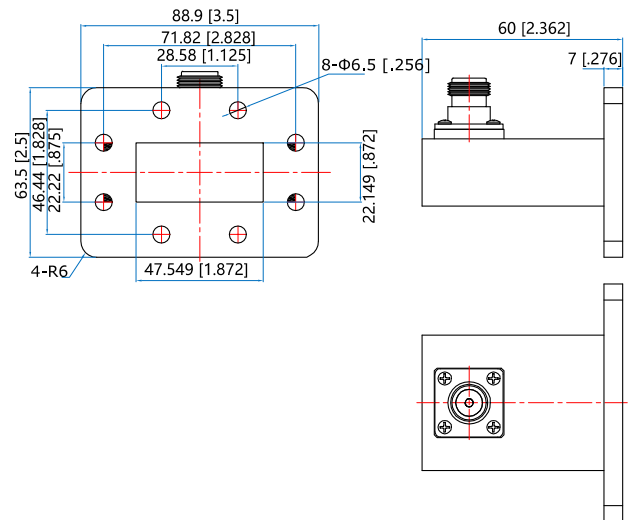
Temperature: -20~+65°C

### How To Order

**NWCA-187-NF-R**

Customization is available upon request.

### Outline Drawings



Unit: mm [in]

Tolerance: ±0.2mm [±0.008in]

## NWCA -1, +-SF -E WR-187 to SMA female, End launch

Features:  
\* Low VSWR

Applications:  
\* Wireless  
\* Transmitter  
\* Laboratory Test  
\* Radar

### Electrical

Frequency: 3.94~5.99GHz  
VSWR: 1.2 max.  
Impedance: 50Ω

### How To Order

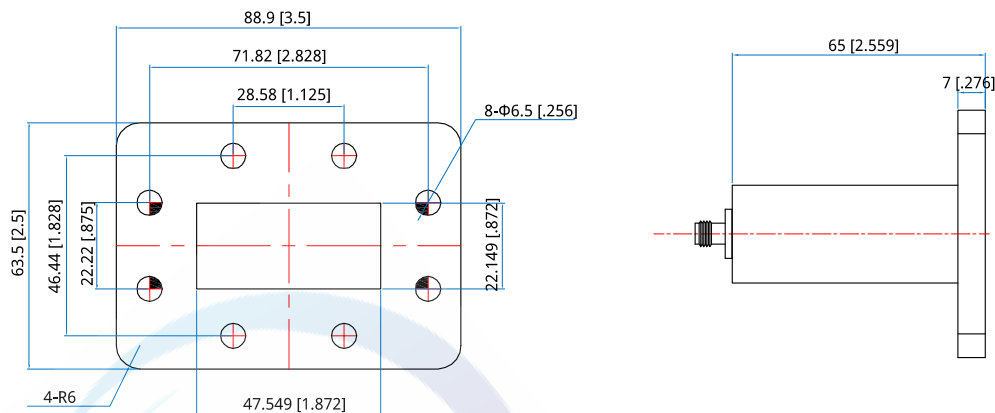
**NWCA-187-SF-E**

Customization is available upon request.

### Mechanical

Length: 65mm  
2.559in  
RF Connectors: SMA Female  
Interface: WR-187  
Flange: FDP48  
Material: Aluminium

### Outline Drawings



Unit: mm [in]

Tolerance:  $\pm 0.2\text{mm}$  [ $\pm 0.008\text{in}$ ]

## NWCA -1, +-SF -R WR-187 to SMA female, Right angle

Features:  
\* Low VSWR

Applications:  
\* Wireless  
\* Transmitter  
\* Laboratory Test  
\* Radar

### Electrical

Frequency: 3.95~5.99GHz  
VSWR: 1.2 max.  
Impedance: 50Ω

### How To Order

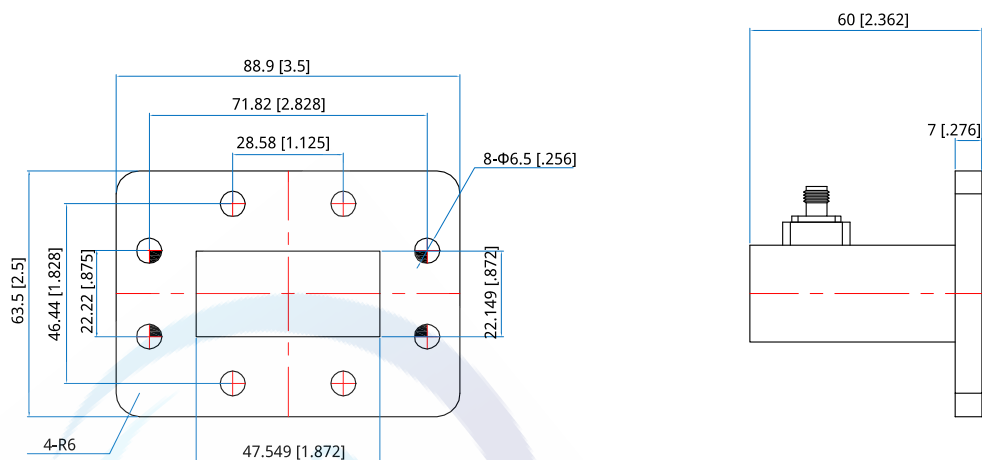
**NWCA-187-SF-R**

Customization is available upon request.

### Mechanical

Length: 60mm  
2.362in  
RF Connectors: SMA Female  
Interface: WR-187  
Flange: FDP48  
Material: Aluminium

### Outline Drawings



Unit: mm [in]

Tolerance: ±0.2mm [±0.008in]



## NWCA-1 - -2 WR-19 to 2.4mm

Features:  
\* Low VSWR

Applications:  
\* Wireless  
\* Transmitter  
\* Laboratory Test  
\* Radar

### Electrical

Frequency:	40~50GHz
VSWR:	1.35 max.
Insertion Loss:	0.45dB max.
Impedance:	50Ω

### Mechanical

RF Connectors:	2.4mm
Interface:	WR-19
Flange:	UG-383/U
Material:	Gold plated brass
Outer Conductor:	Passivated stainless steel
Dielectric:	PE
Inner Conductor:	Gold plated beryllium copper

### How To Order

#### NWCA-19-X-Y

X: Connector type.

Y: End launch: E, Right angle: R.

E - End launch (Outline A)

R - Right angle (Outline B)

Connector naming rules:

2 - 2.4mm Male

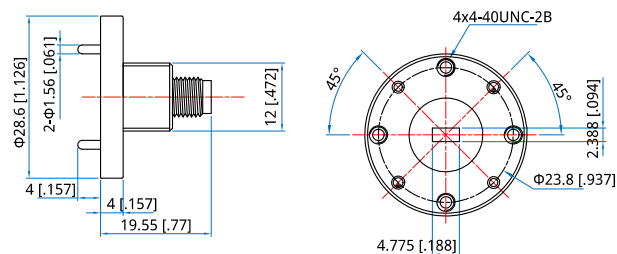
2F - 2.4mm Female (Outline A, Outline B)

Examples:

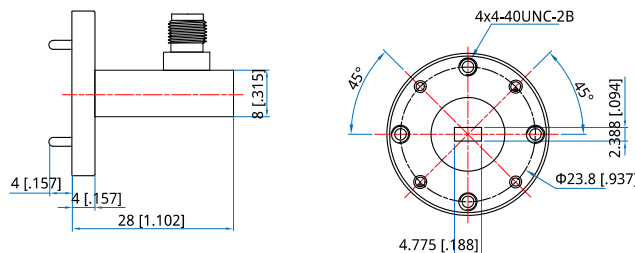
To order a waveguide to coax adapter, WR-19 to 2.4mm female, end launch, specify NWCA-19-2F-E.

Customization is available upon request.

### Outline Drawings



Outline A



Outline B

Unit: mm [in]

Tolerance:  $\pm 0.2\text{mm}$  [ $\pm 0.008\text{in}$ ]

## NWCA-1 - -J WR-19 to 1.85mm

Features:  
\* Low VSWR

Applications:  
\* Wireless  
\* Transmitter  
\* Laboratory Test  
\* Radar

### Electrical

Frequency:	40~60GHz
VSWR:	1.35 max.
Insertion Loss:	0.5dB max.
Impedance:	50Ω

### Mechanical

RF Connectors:	1.85mm
Interface:	WR-19
Flange:	UG-383/U
Material:	Gold plated brass
Outer Conductor:	Passivated stainless steel
Dielectric:	PE
Inner Conductor:	Gold plated beryllium copper

### How To Order

#### NWCA-19-X-Y

X: Connector type.

Y: End launch: E, Right angle: R.

E - End launch (Outline A, Outline C)

R - Right angle (Outline B)

Connector naming rules:

V - 1.85mm Male (Outline A, Outline B)

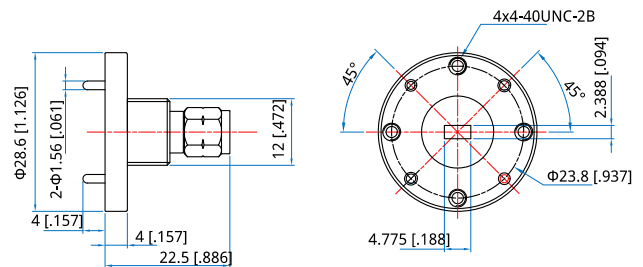
VF - 1.85 Female (Outline C)

Examples:

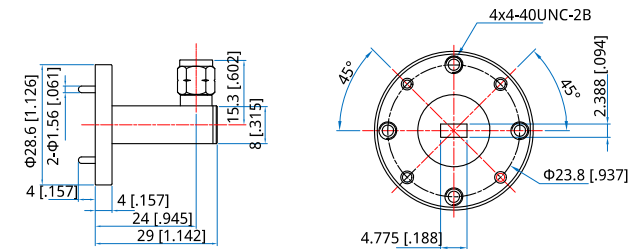
To order a waveguide to coax adapter, WR-19 to 1.85mm male, end launch, specify NWCA-19-V-E.

Customization is available upon request.

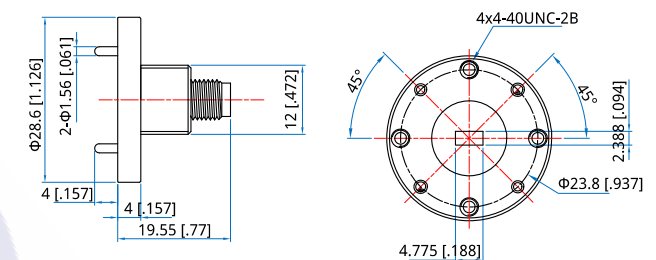
### Outline Drawings



Outline A



Outline B



Outline C

Unit: mm [in]

Tolerance:  $\pm 0.2\text{mm}$  [ $\pm 0.008\text{in}$ ]

NWCA-2100-NF-R  
WR-2100 to N female, Right angle

### Features:

- \* Low VSWR

Applications:

- \* Wireless
- \* Transmitter
- \* Laboratory Test
- \* Radar

## Electrical

Frequency:	0.35~0.53GHz
VSWR:	1.2 max.
Impedance:	50Ω

## How To Order

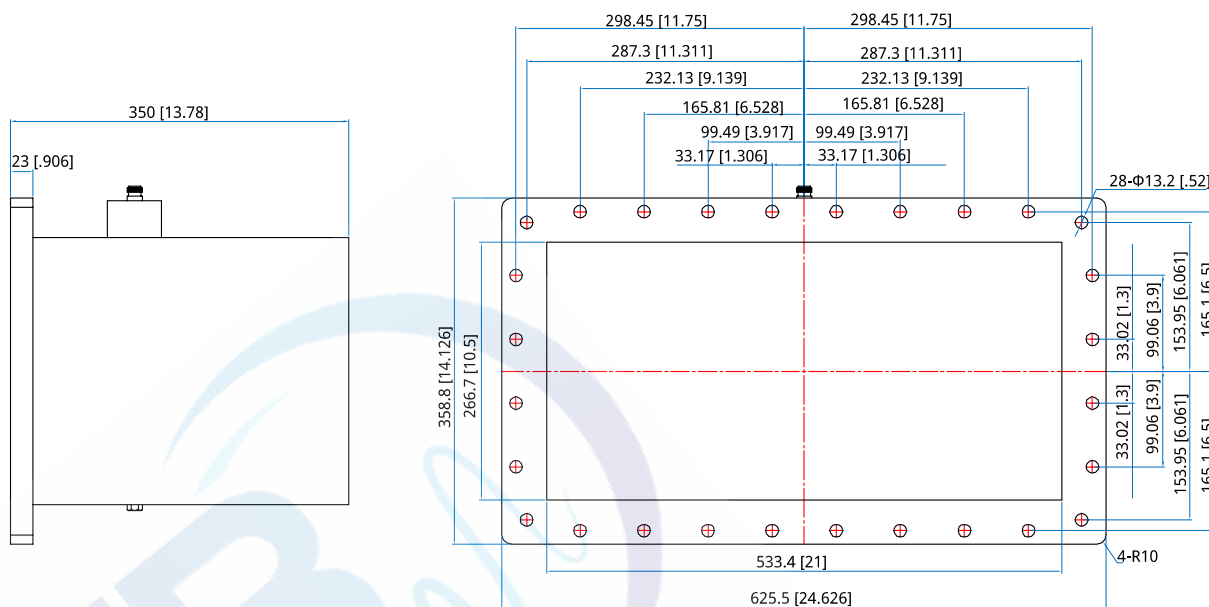
NWCA-2100-NF-R

Customization is available upon request.

## Mechanical

Length:	350mm 13.78in
RF Connectors:	N Female
Interface:	WR-2100
Flange:	FDP4
Material:	Aluminium

## Outline Drawings



Unit: mm [in]

Tolerance:  $\pm 0.2\text{mm}$  [ $\pm 0.008\text{in}$ ]

## NWCA-22-2 WR-22 to 2.4mm

Features:  
\* Low VSWR

Applications:  
\* Wireless  
\* Transmitter  
\* Laboratory Test  
\* Radar

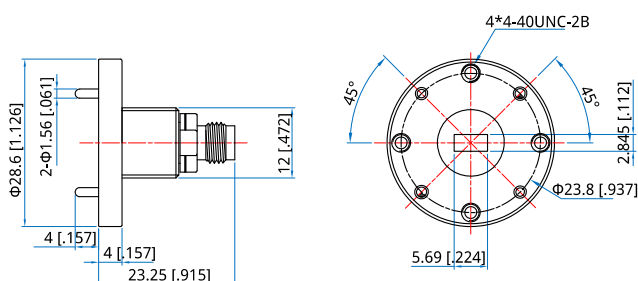
### Electrical

Frequency:	40~50GHz
VSWR:	1.35 max.
Insertion Loss:	0.45dB max.
Impedance:	50Ω

### Mechanical

RF Connectors:	2.4mm
Interface:	WR-22
Flange:	UG-383/U
Outer Conductor:	Passivated stainless steel & gold plated brass
Dielectric:	PEI
Inner Conductor:	Gold plated beryllium copper

### Outline Drawings



Outline A

Unit: mm [in]  
Tolerance: ±0.2mm [±0.008in]

### How To Order

**NWCA-22-X-Y**

X: Connector type.  
Y: End launch: E, Right angle: R.  
End launch - Outline A

Connector naming rules:  
2F - 2.4mm Female - Outline A  
2 - 2.4mm Male

Customization is available upon request.

## NWCA -22- --F -R WR-229 to 7/16 DIN female, Right angle

Features:  
\* Low VSWR

Applications:  
\* Wireless  
\* Transmitter  
\* Laboratory Test  
\* Radar

### Electrical

Frequency: 3.22~4.9GHz  
VSWR: 1.2 max.  
Impedance: 50Ω

### How To Order

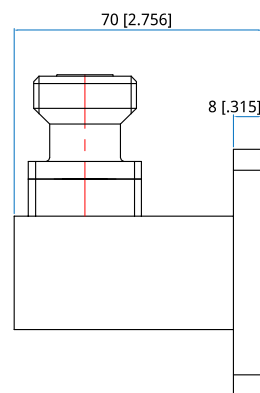
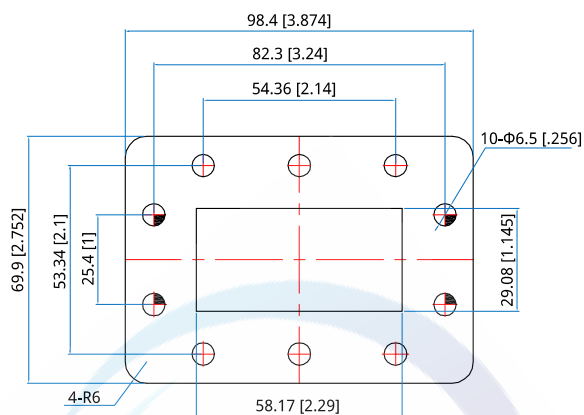
**NWCA-229-7F-R**

Customization is available upon request.

### Mechanical

Length: 70mm  
2.756in  
RF Connectors: 7/16 DIN Female  
Interface: WR-229  
Flange: FDP40  
Material: Aluminium

### Outline Drawings



Unit: mm [in]

Tolerance: ±0.2mm [±0.008in]

## NWCA -22- -NF -E WR-229 to N female, End launch

Features:  
\* Low VSWR

Applications:  
\* Wireless  
\* Transmitter  
\* Laboratory Test  
\* Radar

### Electrical

Frequency: 3.22~4.9GHz  
VSWR: 1.2 max.  
Impedance: 50Ω

### How To Order

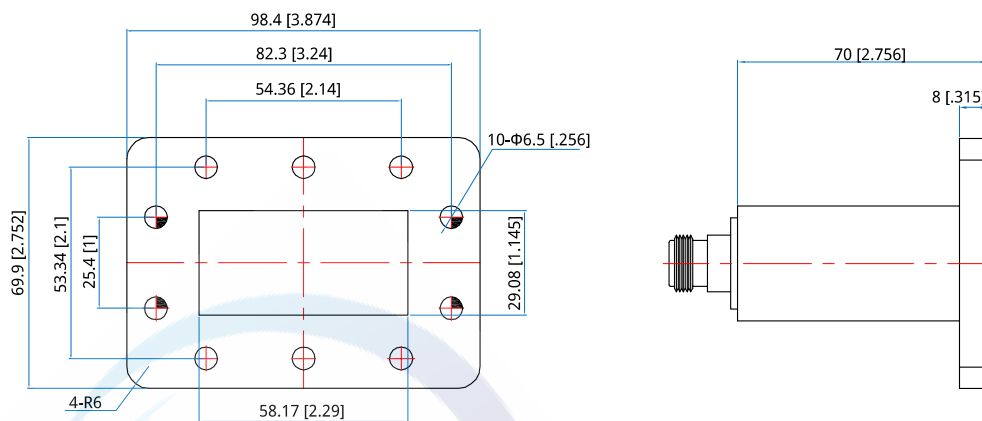
**NWCA-229-NF-E**

Customization is available upon request.

### Mechanical

Length: 70mm  
2.756in  
RF Connectors: N Female  
Interface: WR-229  
Flange: FDP40  
Material: Aluminium

### Outline Drawings



Unit: mm [in]

Tolerance: ±0.2mm [±0.008in]

## NWCA -22- -NF -R WR-229 to N female, Right angle

Features:  
\* Low VSWR

Applications:  
\* Wireless  
\* Transmitter  
\* Laboratory Test  
\* Radar

### Electrical

Frequency: 3.22~4.9GHz  
VSWR: 1.2 max.

### Mechanical

RF Connectors: N Female  
Interface: WR-229  
Flange: FDP40  
Material: Aluminum

### Environmental

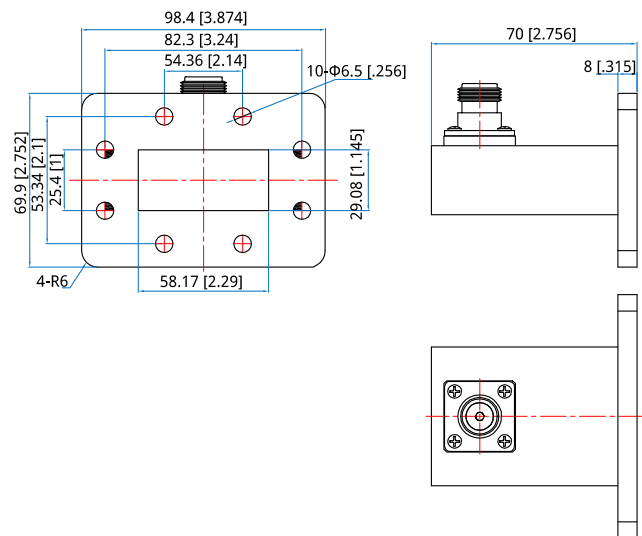
Temperature: -20~+65°C

### How To Order

**NWCA-229-NF-R**

Customization is available upon request.

### Outline Drawings



Unit: mm [in]

Tolerance: ±0.2mm [±0.008in]

## NWCA -22- -SF -E WR-229 to SMA female, End launch

Features:  
\* Low VSWR

Applications:  
\* Wireless  
\* Transmitter  
\* Laboratory Test  
\* Radar

### Electrical

Frequency: 3.22~4.9GHz  
VSWR: 1.2 max.  
Impedance: 50Ω

### How To Order

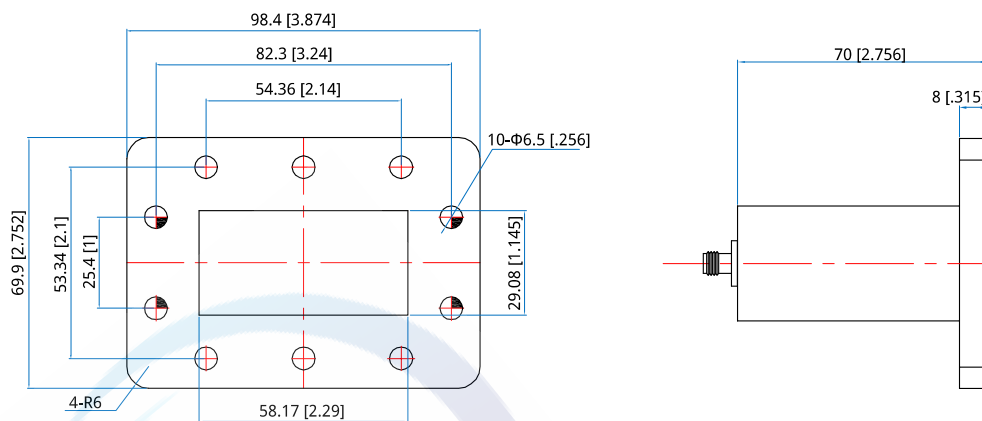
**NWCA-229-SF-E**

Customization is available upon request.

### Mechanical

Length: 70mm  
2.756in  
RF Connectors: SMA Female  
Interface: WR-229  
Flange: FDP40  
Material: Aluminium

### Outline Drawings



Unit: mm [in]

Tolerance: ±0.2mm [±0.008in]



## NWCA -22- -SF -R WR-229 to SMA female, Right angle

Features:  
\* Low VSWR

Applications:  
\* Wireless  
\* Transmitter  
\* Laboratory Test  
\* Radar

### Electrical

Frequency: 3.22~4.9GHz  
VSWR: 1.2 max.  
Impedance: 50Ω

### How To Order

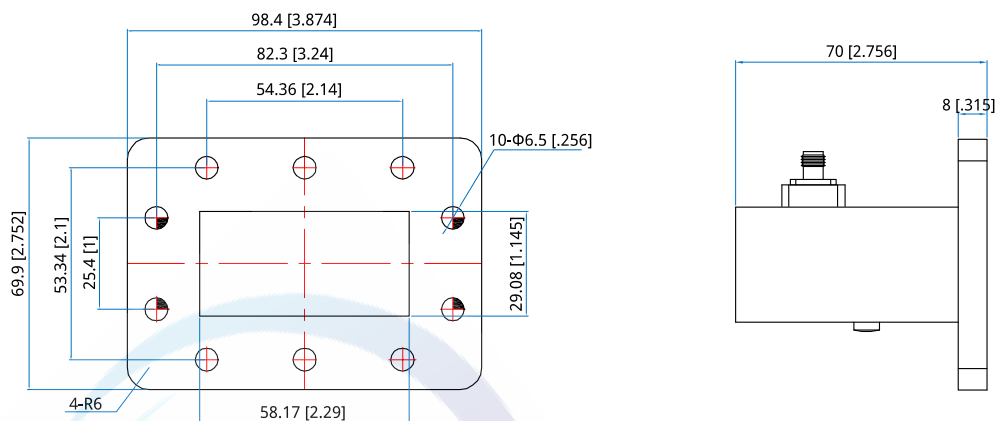
**NWCA-229-SF-R**

Customization is available upon request.

### Mechanical

Length: 70mm  
2.756in  
RF Connectors: SMA Female  
Interface: WR-229  
Flange: FDP40  
Material: Aluminium

### Outline Drawings



Unit: mm [in]      Tolerance:  $\pm 0.2\text{mm}$  [ $\pm 0.008\text{in}$ ]

## NWCA -2' 00-N F -R

### WR-2300 to N female, Right angle

Features:  
\* Low VSWR

Applications:  
\* Wireless  
\* Transmitter  
\* Laboratory Test  
\* Radar

#### Electrical

Frequency: 0.32~0.49GHz  
VSWR: 1.2 max.  
Impedance: 50Ω

#### How To Order

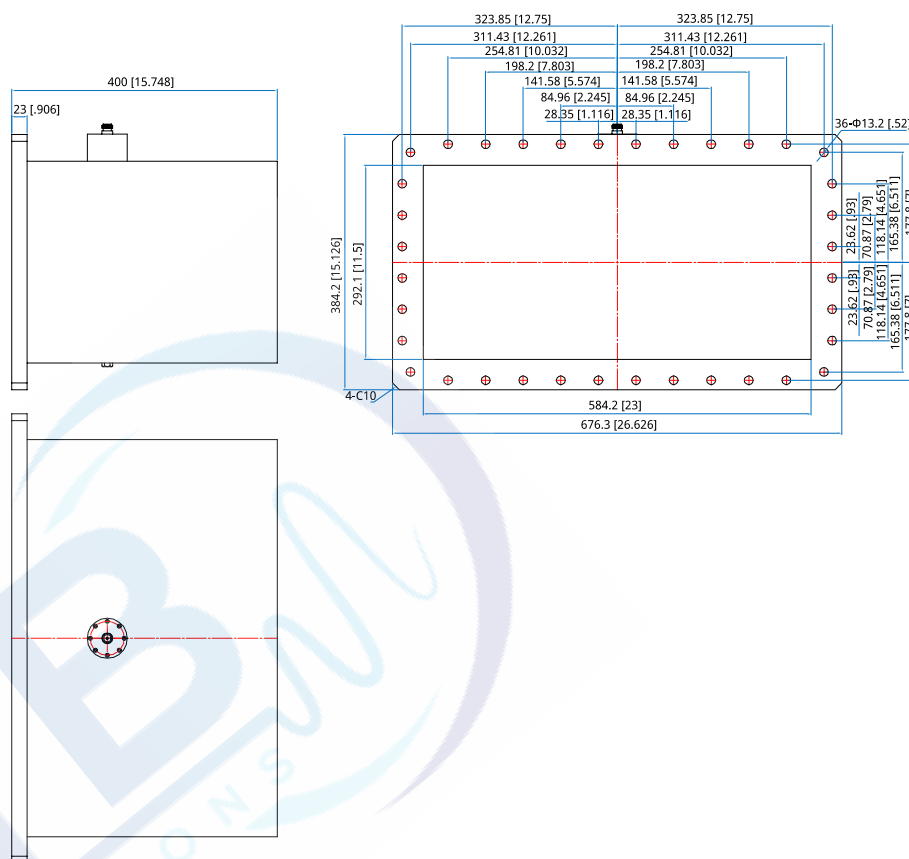
**NWCA-2300-NF-R**

Customization is available upon request.

#### Mechanical

Length: 400mm  
15.748in  
RF Connectors: N Female  
Interface: WR-2300  
Flange: FDP3  
Material: Aluminium

#### Outline Drawings



Unit: mm [in] Tolerance: ±0.2mm [±0.008in]

## NWCA 2, -2F -E WR-28 to 2.4mm Female, End Launch

Features:  
\* Low VSWR

Applications:  
\* Wireless  
\* Transmitter  
\* Laboratory Test  
\* Radar

### Electrical

Frequency: 26.3~40GHz  
VSWR: 1.2 max.  
Impedance: 50Ω

### Mechanical

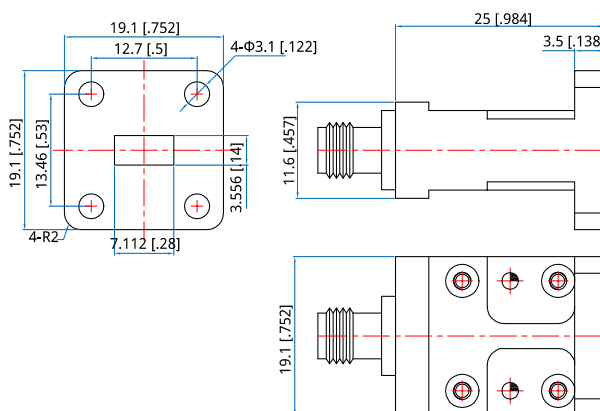
Length: 25mm  
0.984in  
RF Connectors: 2.4mm Female  
Interface: WR-28  
Flange: FBP320  
Material: Copper

### How To Order

**NWCA-28-2F-E**

Customization is available upon request.

### Outline Drawings



Unit: mm [in]

Tolerance: ±0.2mm [±0.008in]

## NWCA-28-2F-E

WR-28 to 2.4mm Female, Right angle

### Features:

- \* Low VSWR

### Applications:

- \* Wireless
- \* Transmitter
- \* Laboratory Test
- \* Radar

### Electrical

Frequency:	26.3–40GHz
VSWR:	1.2 max.
Impedance:	50Ω

### Mechanical

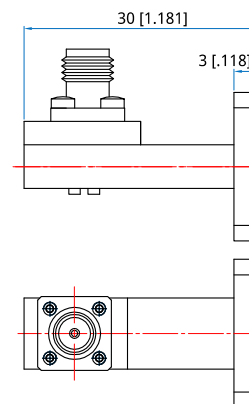
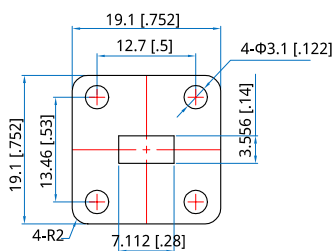
Length:	30mm 1.181in
RF Connectors:	2.4mm Female
Interface:	WR-28
Flange:	FBP320
Material:	Copper

### How To Order

**NWCA-28-2F-E**

Customization is available upon request.

### Outline Drawings



Unit: mm [in]

Tolerance: ±0.2mm [±0.008in]

## NWCA -2, -2F -R WR-28 to 2.4mm Female, Right angle

Features:  
\* Low VSWR

Applications:  
\* Wireless  
\* Transmitter  
\* Laboratory Test  
\* Radar

### Electrical

Frequency: 26.3~40GHz  
VSWR: 1.2 max.  
Impedance: 50Ω

### Mechanical

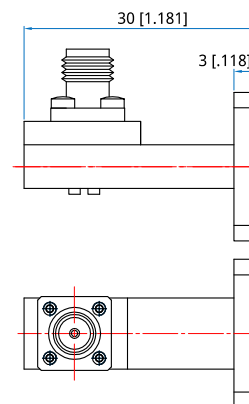
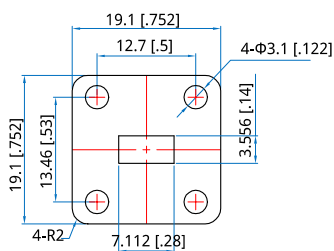
Length: 30mm  
1.181in  
RF Connectors: 2.4mm Female  
Interface: WR-28  
Flange: FBP320  
Material: Copper

### How To Order

**NWCA-28-2F-R**

Customization is available upon request.

### Outline Drawings



Unit: mm [in]

Tolerance: ±0.2mm [±0.008in]

NWCA -2, -2-R

WR-34 to 2.4mm Male, Right angle

Features:  
\* Low VSWR

Applications:  
\* Wireless  
\* Transmitter  
\* Laboratory Test  
\* Radar

## Electrical

Frequency: 26.3~40GHz  
VSWR: 1.2 max.  
Impedance: 50Ω

## Mechanical

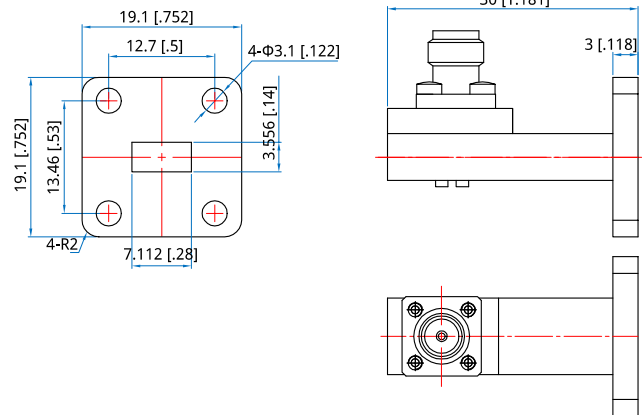
Length: 30mm  
1.181in  
RF Connectors: 2.4mm male  
Interface: WR-28  
Flange: FBP320  
Material: Copper

## How To Order

NWCA-28-2-R

Customization is available upon request.

## Outline Drawings



Unit: mm [in]

Tolerance: ±0.2mm [±0.008in]

## NWCA -2, ( -+F -R WR-284 to 7/16 DIN female, Right angle

Features:  
\* Low VSWR

Applications:  
\* Wireless  
\* Transmitter  
\* Laboratory Test  
\* Radar

### Electrical

Frequency: 2.6~3.95GHz  
VSWR: 1.2 max.  
Impedance: 50Ω

### How To Order

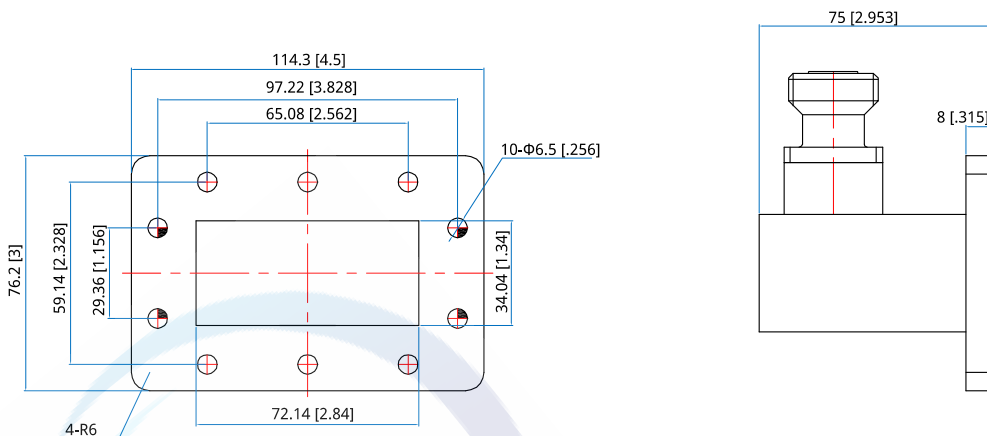
**NWCA-284-7F-R**

Customization is available upon request.

### Mechanical

Length: 75mm  
2.953in  
RF Connectors: 7/16 DIN Female  
Interface: WR-284  
Flange: FDP32  
Material: Aluminium

### Outline Drawings



Unit: mm [in]

Tolerance:  $\pm 0.2\text{mm}$  [ $\pm 0.008\text{in}$ ]

## NWCA -2, ( -NF -E WR-284 to N female, End launch

Features:  
\* Low VSWR

Applications:  
\* Wireless  
\* Transmitter  
\* Laboratory Test  
\* Radar

### Electrical

Frequency: 2.6~3.95GHz  
VSWR: 1.2 max.  
Impedance: 50Ω

### How To Order

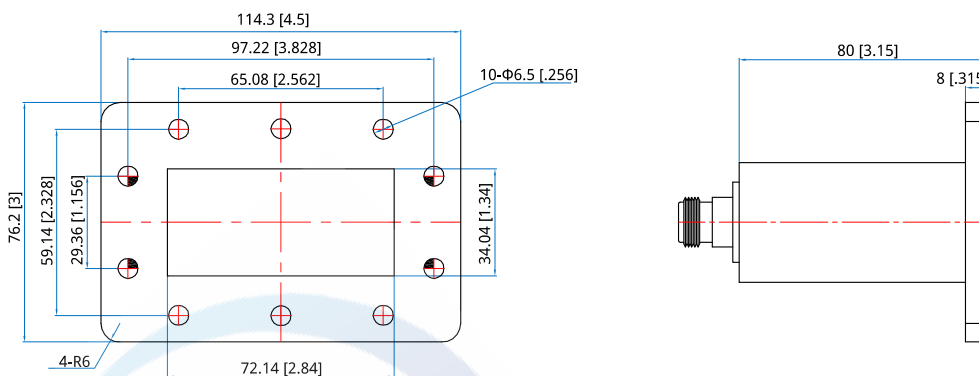
**NWCA-284-NF-E**

Customization is available upon request.

### Mechanical

Length: 80mm  
3.15in  
RF Connectors: N Female  
Interface: WR-284  
Flange: FDP32  
Material: Aluminium

### Outline Drawings



Unit: mm [in]

Tolerance: ±0.2mm [±0.008in]



## NWCA -2, ( -NF -R WR-284 to N female, Right angle

Features:  
\* Low VSWR

Applications:  
\* Wireless  
\* Transmitter  
\* Laboratory Test  
\* Radar

### Electrical

Frequency: 2.6~3.95GHz  
VSWR: 1.2 max.  
Impedance: 50Ω

### How To Order

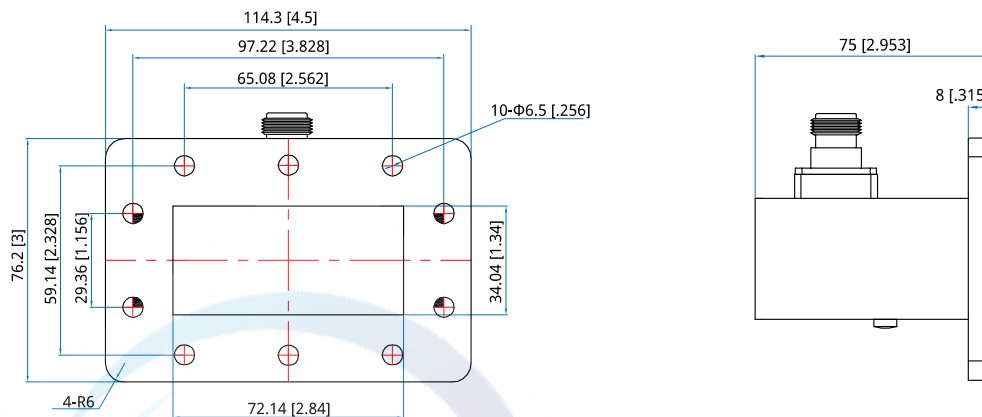
**NWCA-284-NF-R**

Customization is available upon request.

### Mechanical

Length: 75mm  
2.953in  
RF Connectors: N Female  
Interface: WR-284  
Flange: FDP32  
Material: Aluminium

### Outline Drawings



Unit: mm [in]

Tolerance:  $\pm 0.2\text{mm}$  [ $\pm 0.008\text{in}$ ]

## NWCA -2, ( -SF -R WR-284 to SMA female, Right angle

Features:  
\* Low VSWR

Applications:  
\* Wireless  
\* Transmitter  
\* Laboratory Test  
\* Radar

### Electrical

Frequency: 2.6~3.95GHz  
VSWR: 1.2 max.  
Impedance: 50Ω

### How To Order

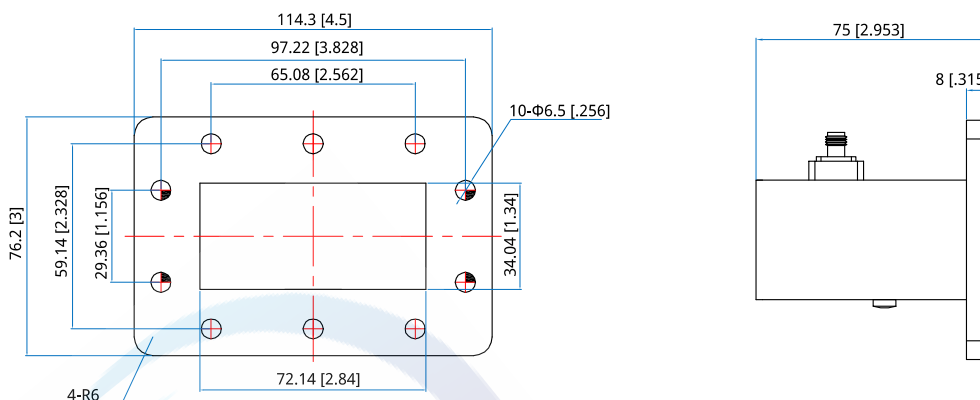
**NWCA-284-SF-R**

Customization is available upon request.

### Mechanical

Length: 75mm  
2.953in  
RF Connectors: SMA Female  
Interface: WR-284  
Flange: FDP32  
Material: Aluminium

### Outline Drawings



Unit: mm [in]    Tolerance: ±0.2mm [±0.008in]

## NWCA -2, -? F -E

### WR-28 to 2.92mm Female, End Launch

Features:  
\* Low VSWR

Applications:  
\* Wireless  
\* Transmitter  
\* Laboratory Test  
\* Radar

#### Electrical

Frequency: 26.3~40GHz  
VSWR: 1.2 max.

#### Mechanical

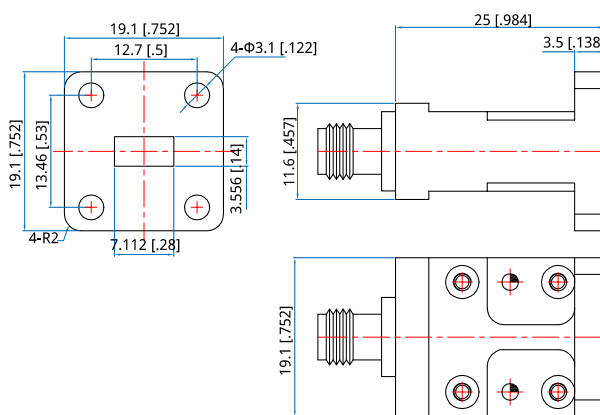
Length: 25mm  
0.984in  
RF Connectors: 2.92mm Female  
Interface: WR-28  
Flange: FBP320  
Material: Copper

#### How To Order

**NWCA-28-KF-E**

Customization is available upon request.

#### Outline Drawings



Unit: mm [in]

Tolerance:  $\pm 0.2\text{mm}$  [ $\pm 0.008\text{in}$ ]

NWCA -2, -? F-R

WR-28 to 2.92mm Female, Right angle

Features:  
\* Low VSWR

Applications:  
\* Wireless  
\* Transmitter  
\* Laboratory Test  
\* Radar

## Electrical

Frequency: 26.3~40GHz  
VSWR: 1.2 max.

## Mechanical

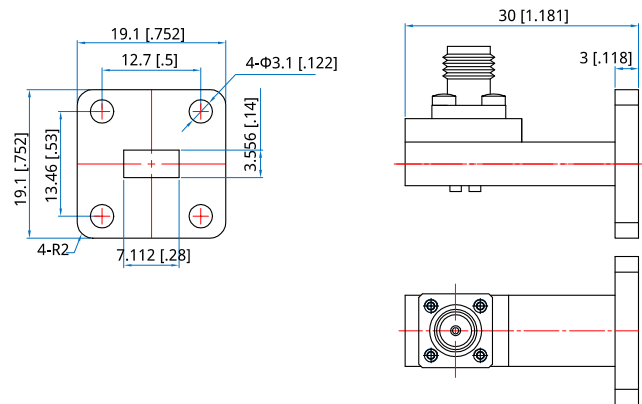
Length: 30mm  
1.181in  
RF Connectors: 2.92mm Female  
Interface: WR-28  
Flange: FBP320  
Material: Copper

## How To Order

**NWCA-28-KF-R**

Customization is available upon request.

## Outline Drawings



Unit: mm [in]

Tolerance:  $\pm 0.2\text{mm}$  [ $\pm 0.008\text{in}$ ]

NWCA -2, -? -R

WR-34 to 2.92mm Male, Right angle

## Features:

- \* Low VSWR

## Applications:

- \* Wireless
- \* Transmitter
- \* Laboratory Test
- \* Radar

## Electrical

Frequency:	26.3~40GHz
VSWR:	1.2 max.
Impedance:	50Ω

## Mechanical

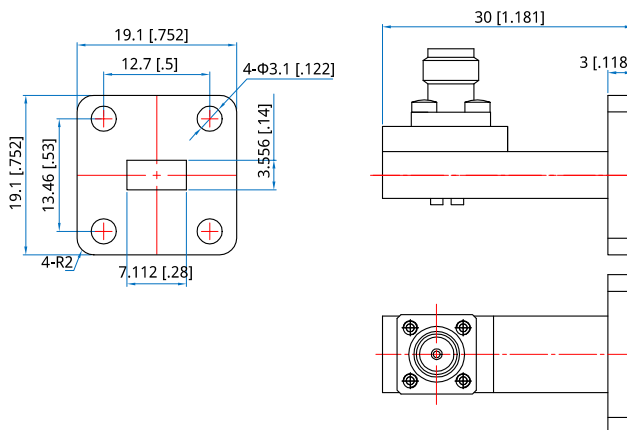
Length:	30mm 1.181in
RF Connectors:	2.92mm male
Interface:	WR-28
Flange:	FBP320
Material:	Copper

## How To Order

NWCA-28-K-R

Customization is available upon request.

## Outline Drawings



Unit: mm [in]

Tolerance: ±0.2mm [±0.008in]

## NWCA -' ( O-+F -E WR-340 to 7/16 DIN female, End launch

Features:  
\* Low VSWR

Applications:  
\* Wireless  
\* Transmitter  
\* Laboratory Test  
\* Radar

### Electrical

Frequency: 2.17~3.3GHz  
VSWR: 1.2 max.  
Impedance: 50Ω

### How To Order

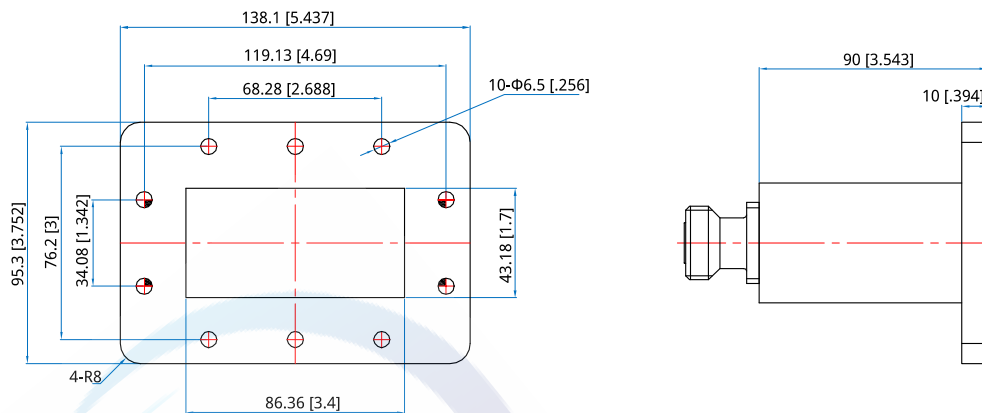
**NWCA-340-7F-E**

Customization is available upon request.

### Mechanical

Length: 90mm  
3.543in  
RF Connectors: 7/16 DIN Female  
Interface: WR-340  
Flange: FDP26  
Material: Aluminium

### Outline Drawings



Unit: mm [in]    Tolerance: ±0.2mm [±0.008in]

## NWCA -' ( O-+F -R WR-340 to 7/16 DIN Female, Right angle

Features:  
\* Low VSWR

Applications:  
\* Wireless  
\* Transmitter  
\* Laboratory Test  
\* Radar

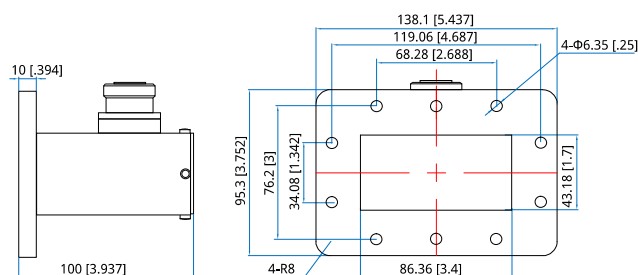
### Electrical

Frequency: 2.17~3.3GHz  
VSWR: 1.25 max.  
Insertion Loss: 0.2dB max.  
Average Power: 200W

### Mechanical

Length: 100mm  
3.937in  
RF Connectors: 7/16 DIN Female  
Interface: WR-340  
Flange: FDP26  
Material: Aluminum

### Outline Drawings



Unit: mm [in]  
Tolerance:  $\pm 0.2\text{mm}$  [ $\pm 0.008\text{in}$ ]

### How To Order

**NWCA-340-7F-R**

Customization is available upon request.

## NWCA-' (O-NF-E WR-340 to N female, End launch

Features:  
\* Low VSWR

Applications:  
\* Wireless  
\* Transmitter  
\* Laboratory Test  
\* Radar

### Electrical

Frequency: 2.17~3.3GHz  
VSWR: 1.2 max.  
Impedance: 50Ω

### How To Order

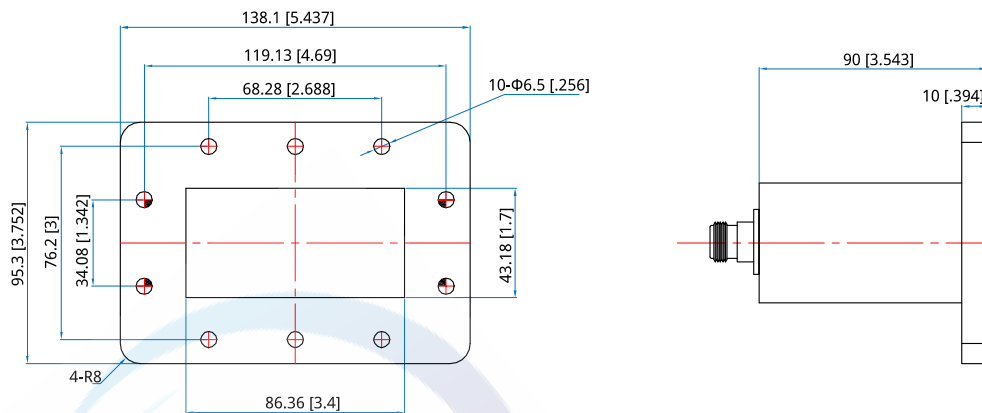
**NWCA-340-NF-E**

Customization is available upon request.

### Mechanical

Length: 90mm  
3.543in  
RF Connectors: N Female  
Interface: WR-340  
Flange: FDP26  
Material: Aluminium

### Outline Drawings



Unit: mm [in]

Tolerance: ±0.2mm [±0.008in]



NWCA -' ( O-NF-R  
WR-340 to N female, Right angle

Features:  
\* Low VSWR

\* Low VSWR

Applications:

- \* Wireless
- \* Transmitter
- \* Laboratory Test
- \* Radar

## Electrical

Frequency:	2.17~3.3GHz
VSWR:	1.2 max.
Impedance:	50Ω

## How To Order

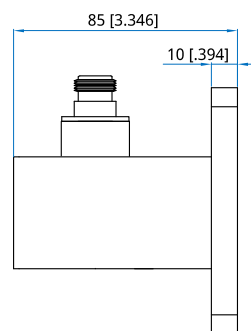
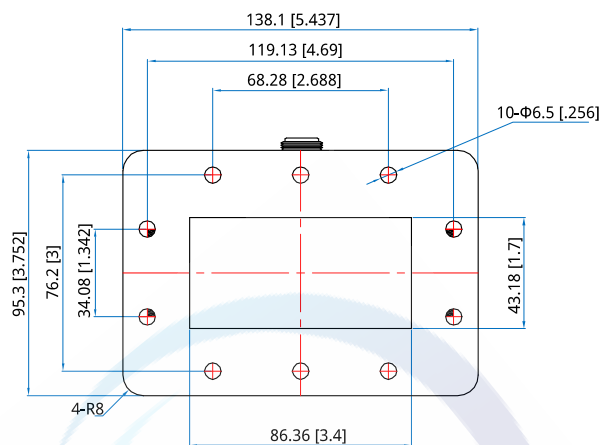
NWCA-340-NF-R

Customization is available upon request.

## Mechanical

Length:	85mm
	3.346in
RF Connectors:	N Female
Interface:	WR-340
Flange:	FDP26
Material:	Aluminium

## Outline Drawings



Unit: mm [in]

Tolerance:  $\pm 0.2\text{mm}$  [ $\pm 0.008\text{in}$ ]

## NWCA -' ( O-N-R WR-340 to N male, Right angle

Features:  
\* Low VSWR

Applications:  
\* Wireless  
\* Transmitter  
\* Laboratory Test  
\* Radar

### Electrical

Frequency: 2.17~3.3GHz  
VSWR: 1.2 max.  
Impedance: 50Ω

### How To Order

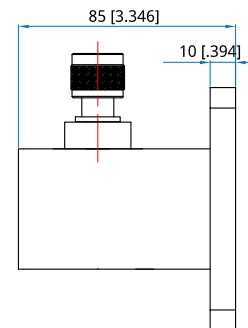
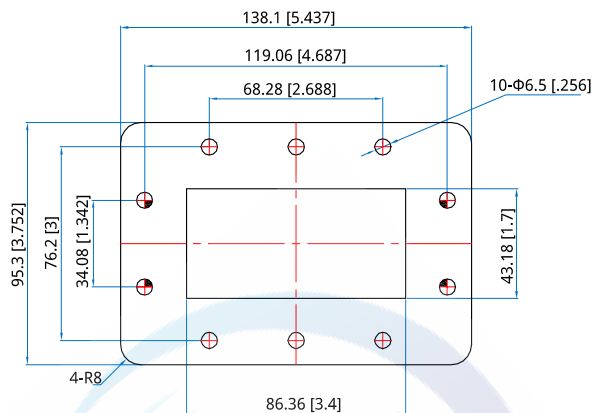
**NWCA-340-N-R**

Customization is available upon request.

### Mechanical

Length: 85mm  
3.346in  
RF Connectors: N male  
Interface: WR-340  
Flange: FDP26  
Material: Aluminium

### Outline Drawings



Unit: mm [in]

Tolerance: ±0.2mm [±0.008in]

## NWCA -' ( O-SF -E WR-340 to SMA female, End launch

Features:  
\* Low VSWR

Applications:  
\* Wireless  
\* Transmitter  
\* Laboratory Test  
\* Radar

### Electrical

Frequency: 2.17~3.3GHz  
VSWR: 1.2 max.  
Impedance: 50Ω

### How To Order

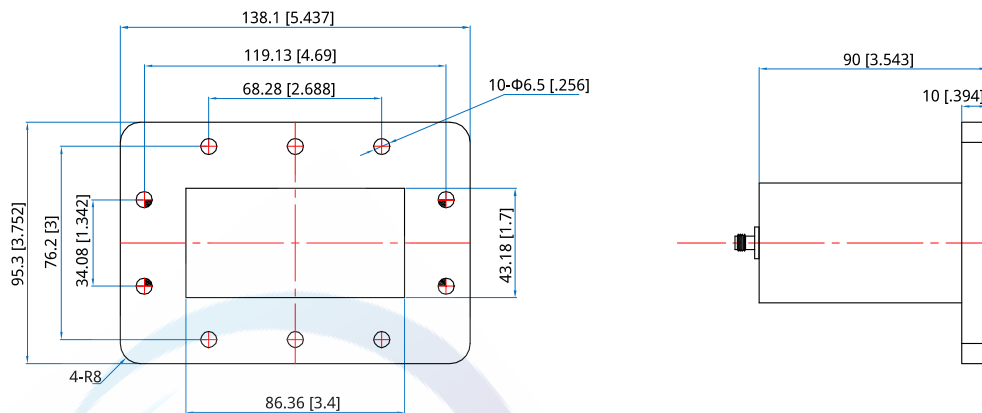
**NWCA-340-SF-E**

Customization is available upon request.

### Mechanical

Length: 90mm  
3.543in  
RF Connectors: SMA Female  
Interface: WR-340  
Flange: FDP26  
Material: Aluminium

### Outline Drawings



Unit: mm [in]      Tolerance:  $\pm 0.2\text{mm}$  [ $\pm 0.008\text{in}$ ]

## NWCA-' (O-SF-R WR-340 to SMA female, Right angle

Features:  
\* Low VSWR

Applications:  
\* Wireless  
\* Transmitter  
\* Laboratory Test  
\* Radar

### Electrical

Frequency: 2.17~3.3GHz  
VSWR: 1.2 max.  
Impedance: 50Ω

### How To Order

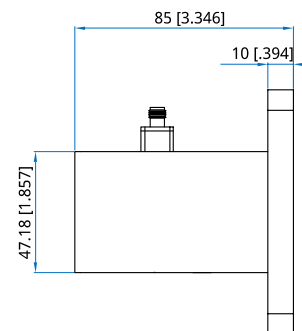
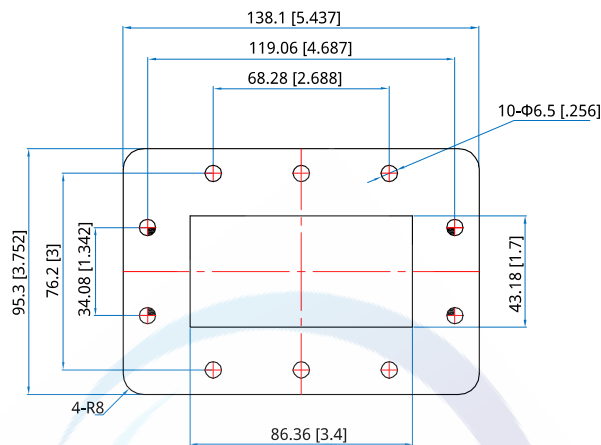
**NWCA-340-SF-R**

Customization is available upon request.

### Mechanical

Length: 85mm  
3.346in  
RF Connectors: SMA Female  
Interface: WR-340  
Flange: FDP26  
Material: Aluminium

### Outline Drawings



Unit: mm [in]

Tolerance: ±0.2mm [±0.008in]

## NWCA-' (-2F-E WR-34 to 2.4mm Female, End Launch

Features:  
\* Low VSWR

Applications:  
\* Wireless  
\* Transmitter  
\* Laboratory Test  
\* Radar

### Electrical

Frequency: 21.7~33GHz  
VSWR: 1.2 max.  
Impedance: 50Ω

### Mechanical

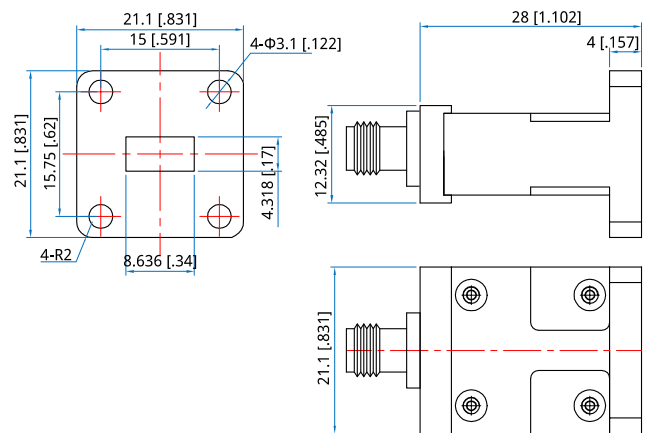
Length: 28mm  
1.102in  
RF Connectors: 2.4mm Female  
Interface: WR-34  
Flange: FBP260  
Material: Copper

### How To Order

**NWCA-34-2F-E**

Customization is available upon request.

### Outline Drawings



Unit: mm [in]

Tolerance: ±0.2mm [±0.008in]

## NWCA-' (-2F-R WR-34 to 2.4mm Female, Right angle

Features:  
\* Low VSWR

Applications:  
\* Wireless  
\* Transmitter  
\* Laboratory Test  
\* Radar

### Electrical

Frequency: 21.7~33GHz  
VSWR: 1.2 max.  
Impedance: 50Ω

### Mechanical

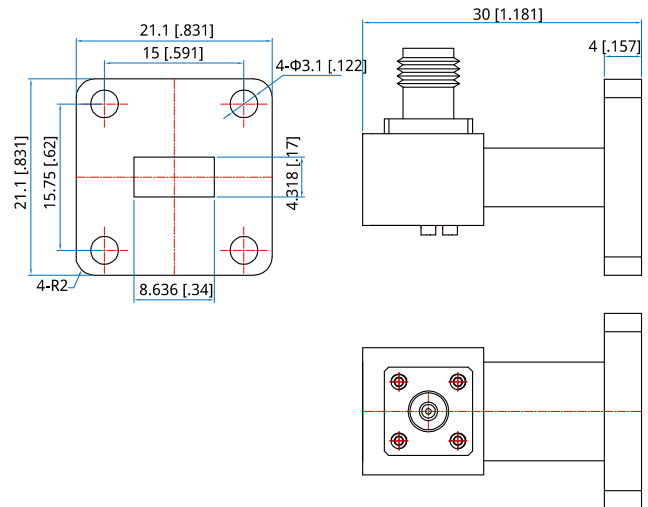
Length: 30mm  
1.181in  
RF Connectors: 2.4mm Female  
Interface: WR-34  
Flange: FBP260  
Material: Copper

### How To Order

**NWCA-34-2F-R**

Customization is available upon request.

### Outline Drawings



Unit: mm [in]

Tolerance: ±0.2mm [±0.008in]

## NWCA-' (-2-R WR-34 to 2.4mm Male, Right angle

Features:  
\* Low VSWR

Applications:  
\* Wireless  
\* Transmitter  
\* Laboratory Test  
\* Radar

### Electrical

Frequency: 21.7~33GHz  
VSWR: 1.2 max.  
Impedance: 50Ω

### Mechanical

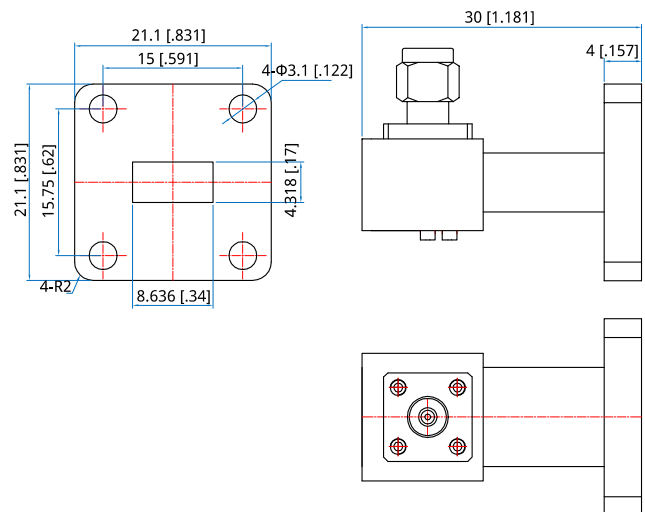
Length: 30mm  
1.181in  
RF Connectors: 2.4mm male  
Interface: WR-34  
Flange: FBP260  
Material: Copper

### How To Order

**NWCA-34-2-R**

Customization is available upon request.

### Outline Drawings



Unit: mm [in]

Tolerance: ±0.2mm [±0.008in]

## NWCA-' ( -? F-E WR-34 to 2.92mm Female, End Launch

Features:  
\* Low VSWR

Applications:  
\* Wireless  
\* Transmitter  
\* Laboratory Test  
\* Radar

### Electrical

Frequency: 21.7~33GHz  
VSWR: 1.2 max.

### Mechanical

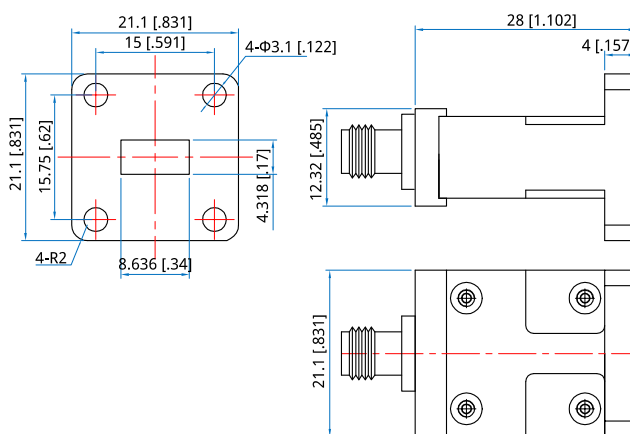
Length: 28mm  
1.102in  
RF Connectors: 2.92mm Female  
Interface: WR-34  
Flange: FBP260  
Material: Copper

### How To Order

**NWCA-34-KF-E**

Customization is available upon request.

### Outline Drawings



Unit: mm [in]

Tolerance: ±0.2mm [±0.008in]



NWCA-' ( -? F-R

WR-34 to 2.92mm Female, Right angle

Features:  
\* Low VSWR

Applications:  
\* Wireless  
\* Transmitter  
\* Laboratory Test  
\* Radar

## Electrical

Frequency: 21.7~33GHz  
VSWR: 1.2 max.  
Impedance: 50Ω

## Mechanical

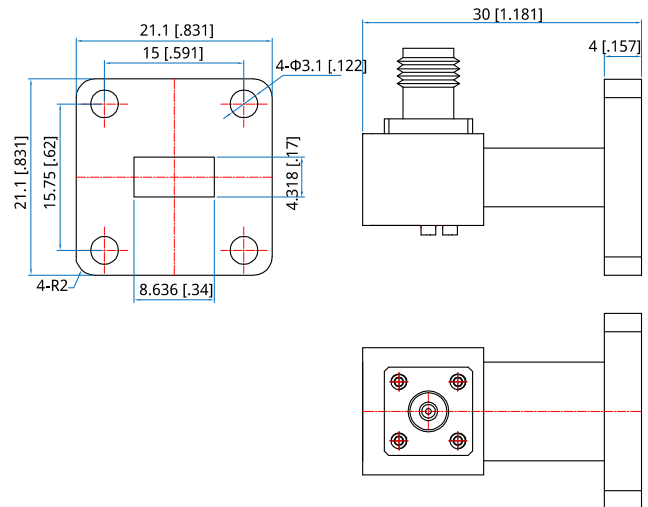
Length: 30mm  
1.181in  
RF Connectors: 2.92mm Female  
Interface: WR-34  
Flange: FBP260  
Material: Copper

## How To Order

NWCA-34-KF-R

Customization is available upon request.

## Outline Drawings



Unit: mm [in]

Tolerance: ±0.2mm [±0.008in]

## NWCA-( 2-2F -E WR-42 to 2.4mm Female, End Launch

Features:  
\* Low VSWR

Applications:  
\* Wireless  
\* Transmitter  
\* Laboratory Test  
\* Radar

### Electrical

Frequency: 17.6~26.7GHz  
VSWR: 1.2 max.  
Impedance: 50Ω

### Mechanical

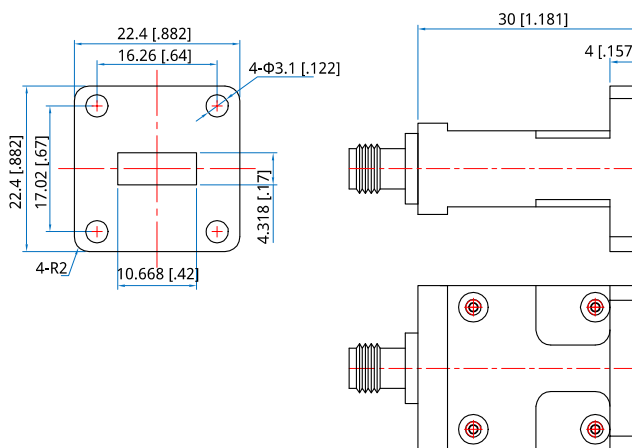
Length: 30mm  
1.181in  
RF Connectors: 2.4mm Female  
Interface: WR-42  
Flange: FBP220  
Material: Copper

### How To Order

**NWCA-42-2F-E**

Customization is available upon request.

### Outline Drawings



Unit: mm [in]

Tolerance: ±0.2mm [±0.008in]

## NWCA-( 2-2F -R WR-42 to 2.4mm Female, Right angle

Features:  
\* Low VSWR

Applications:  
\* Wireless  
\* Transmitter  
\* Laboratory Test  
\* Radar

### Electrical

Frequency: 17.6~26.7GHz  
VSWR: 1.2 max.  
Impedance: 50Ω

### Mechanical

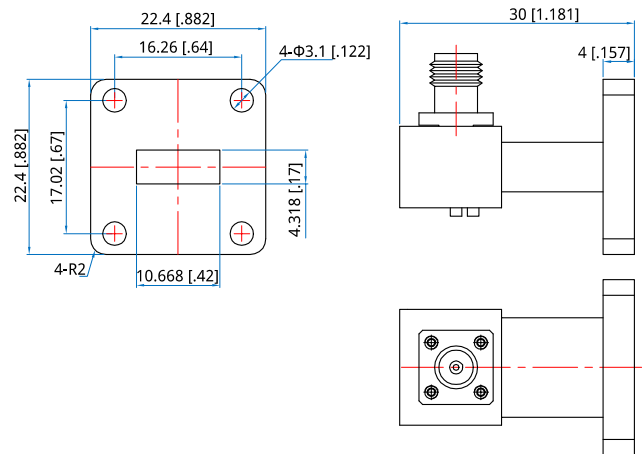
Length: 30mm  
1.181in  
RF Connectors: 2.4mm Female  
Interface: WR-42  
Flange: FBP220  
Material: Copper

### How To Order

**NWCA-42-2F-R**

Customization is available upon request.

### Outline Drawings



Unit: mm [in]

Tolerance: ±0.2mm [±0.008in]

## NWCA-( 2-? F-E WR-42 to 2.92mm Female, End Launch

Features:  
\* Low VSWR

Applications:  
\* Wireless  
\* Transmitter  
\* Laboratory Test  
\* Radar

### Electrical

Frequency: 17.6~26.7GHz  
VSWR: 1.2 max.

### Mechanical

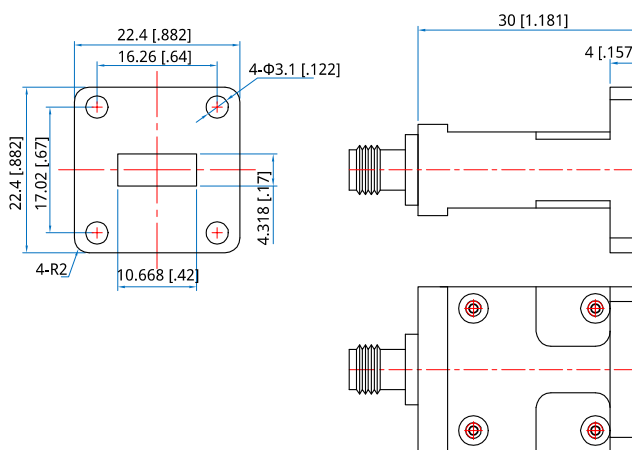
Length: 30mm  
1.181in  
RF Connectors: 2.92mm Female  
Interface: WR-42  
Flange: FBP220  
Material: Copper

### How To Order

**NWCA-42-KF-E**

Customization is available upon request.

### Outline Drawings



Unit: mm [in]

Tolerance:  $\pm 0.2\text{mm}$  [ $\pm 0.008\text{in}$ ]

## NWCA-( 2-? F-R WR-42 to 2.92mm Female, Right angle

Features:  
\* Low VSWR

Applications:  
\* Wireless  
\* Transmitter  
\* Laboratory Test  
\* Radar

### Electrical

Frequency: 17.6~26.7GHz  
VSWR: 1.2 max.

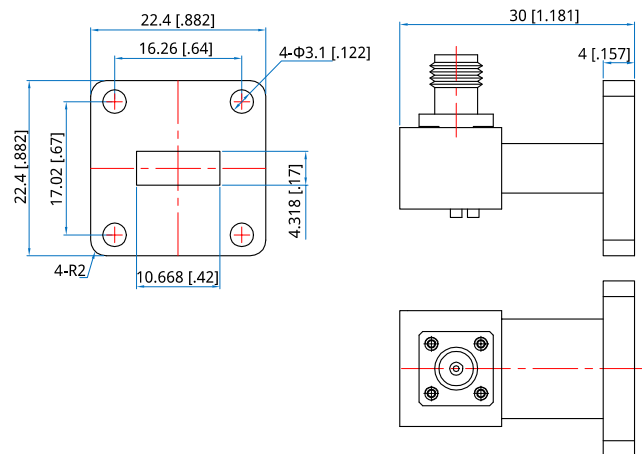
### Mechanical

Length: 30mm  
1.181in  
RF Connectors: 2.92mm Female  
Interface: WR-42  
Flange: FBP220  
Material: Copper

### How To Order NWCA-42-KF-R

Customization is available upon request.

### Outline Drawings



Unit: mm [in]  
Tolerance:  $\pm 0.2\text{mm}$  [ $\pm 0.008\text{in}$ ]

## NWCA-( 2-SF -R WR-42 to SMA Female, Right angle

Features:  
\* Low VSWR

Applications:  
\* Wireless  
\* Transmitter  
\* Laboratory Test  
\* Radar

### Electrical

Frequency: 17.6~26.7GHz  
VSWR: 1.2 max.  
Impedance: 50Ω

### Mechanical

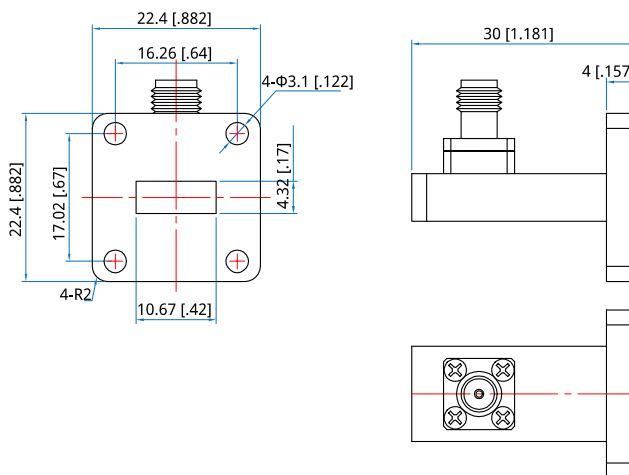
Length: 30mm  
1.181in  
RF Connectors: SMA Female  
Interface: WR-42  
Flange: FBP220  
Material: Aluminium

### How To Order

**NWCA-42-SF-R**

Customization is available upon request.

### Outline Drawings



Unit: mm [in]

Tolerance: ±0.2mm [±0.008in]

## NWCA-( ' O-+F -E WR-430 to 7/16 DIN female, End launch

Features:  
\* Low VSWR

Applications:  
\* Wireless  
\* Transmitter  
\* Laboratory Test  
\* Radar

### Electrical

Frequency: 1.72~2.61GHz  
VSWR: 1.2 max.  
Impedance: 50Ω

### How To Order

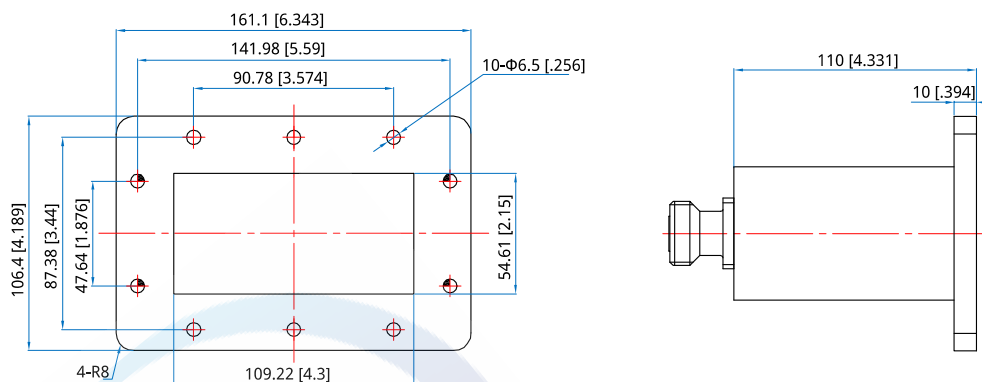
**NWCA-430-7F-E**

Customization is available upon request.

### Mechanical

Length: 110mm  
4.331in  
RF Connectors: 7/16 DIN Female  
Interface: WR-430  
Flange: FDP22  
Material: Aluminium

### Outline Drawings



Unit: mm [in]

Tolerance: ±0.2mm [±0.008in]

NWCA-( ' O-+F-R  
WR-430 to 7/16 DIN female, Right angle

Features:  
\* Low VSWR

\* Low VSWR

Applications:

- \* Wireless
- \* Transmitter
- \* Laboratory Test
- \* Radar

## Electrical

Frequency:	1.72~2.61GHz
VSWR:	1.2 max.
Impedance:	50Ω

## How To Order

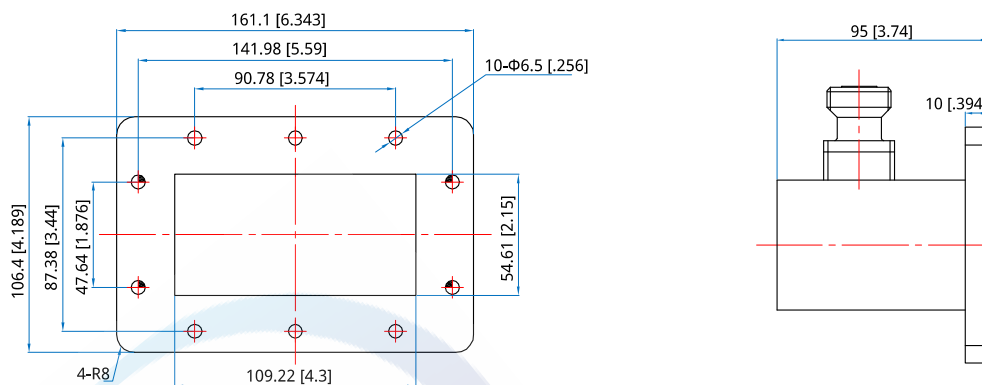
NWCA-430-7F-R

Customization is available upon request.

## Mechanical

Length:	95mm
	3.74in
RF Connectors:	7/16 DIN Female
Interface:	WR-430
Flange:	FDP22
Material:	Aluminjum

## Outline Drawings



Unit: mm [in]

Tolerance:  $\pm 0.2\text{mm}$  [ $\pm 0.008\text{in}$ ]



## NWCA-( ' O-NF -E WR-430 to N female, End launch

Features:  
\* Low VSWR

Applications:  
\* Wireless  
\* Transmitter  
\* Laboratory Test  
\* Radar

### Electrical

Frequency: 1.72~2.61GHz  
VSWR: 1.2 max.  
Impedance: 50Ω

### How To Order

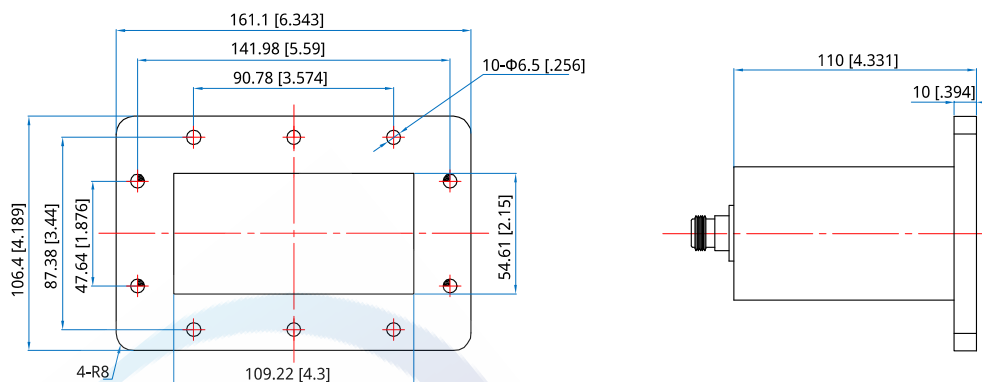
**NWCA-430-NF-E**

Customization is available upon request.

### Mechanical

Length: 110mm  
4.331in  
RF Connectors: N Female  
Interface: WR-430  
Flange: FDP22  
Material: Aluminium

### Outline Drawings



Unit: mm [in]

Tolerance: ±0.2mm [±0.008in]

## NWCA-( ' O-NF -R WR-430 to N female, Right angle

Features:  
\* Low VSWR

Applications:  
\* Wireless  
\* Transmitter  
\* Laboratory Test  
\* Radar

### Electrical

Frequency: 1.72~2.61GHz  
VSWR: 1.2 max.  
Impedance: 50Ω

### How To Order

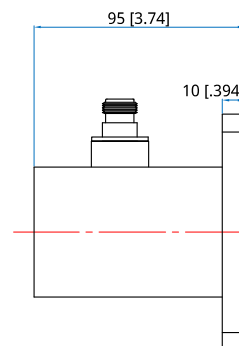
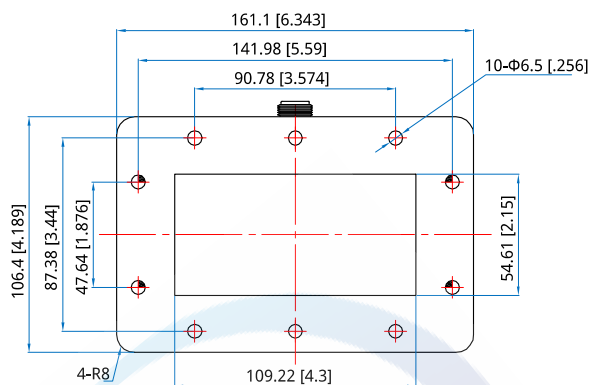
**NWCA-430-NF-R**

Customization is available upon request.

### Mechanical

Length: 95mm  
3.74in  
RF Connectors: N Female  
Interface: WR-430  
Flange: FDP22  
Material: Aluminium

### Outline Drawings



Unit: mm [in]

Tolerance: ±0.2mm [±0.008in]

## NWCA-( ' O-SF -E WR-430 to SMA female, End launch

Features:  
\* Low VSWR

Applications:  
\* Wireless  
\* Transmitter  
\* Laboratory Test  
\* Radar

### Electrical

Frequency: 1.72~2.61GHz  
VSWR: 1.2 max.  
Impedance: 50Ω

### How To Order

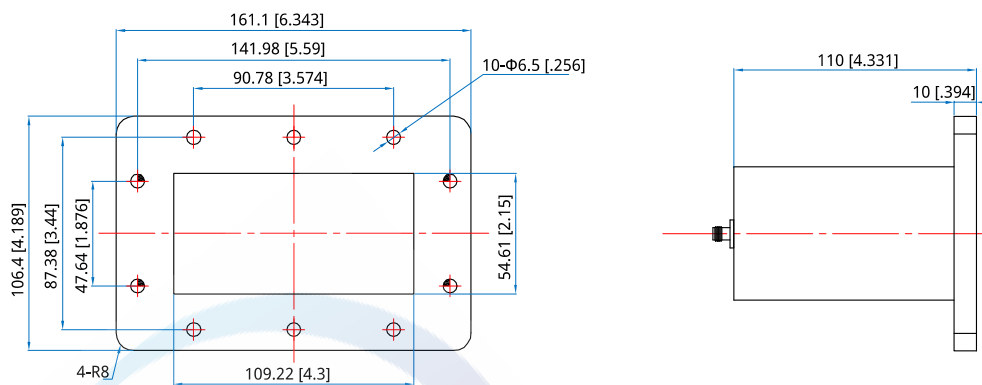
**NWCA-430-SF-E**

Customization is available upon request.

### Mechanical

Length: 110mm  
4.331in  
RF Connectors: SMA Female  
Interface: WR-430  
Flange: FDP22  
Material: Aluminium

### Outline Drawings



Unit: mm [in]

Tolerance: ±0.2mm [±0.008in]

## NWCA-( ' O-SF -R WR-430 to SMA female, Right angle

Features:  
\* Low VSWR

Applications:  
\* Wireless  
\* Transmitter  
\* Laboratory Test  
\* Radar

### Electrical

Frequency: 1.72~2.61GHz  
VSWR: 1.2 max.  
Impedance: 50Ω

### How To Order

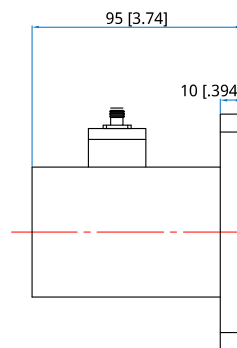
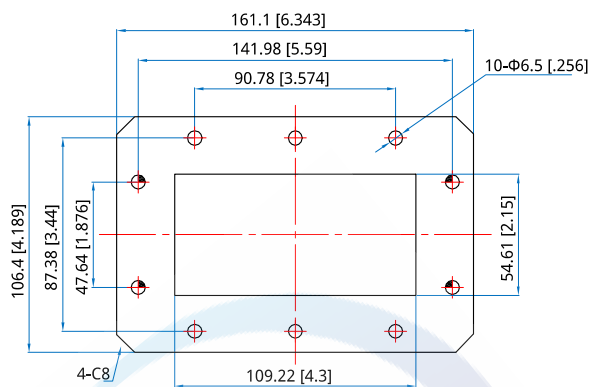
**NWCA-430-SF-R**

Customization is available upon request.

### Mechanical

Length: 95mm  
3.74in  
RF Connectors: SMA Female  
Interface: WR-430  
Flange: FDP22  
Material: Aluminium

### Outline Drawings



Unit: mm [in]

Tolerance: ±0.2mm [±0.008in]

## NWCA -510-+F -E

### WR-510 to 7/16 DIN female, End launch

#### Features:

- \* Low VSWR

#### Applications:

- \* Wireless
- \* Transmitter
- \* Laboratory Test
- \* Radar

#### Electrical

Frequency: 1.45~2.2GHz  
 VSWR: 1.2 max.  
 Impedance: 50Ω

#### How To Order

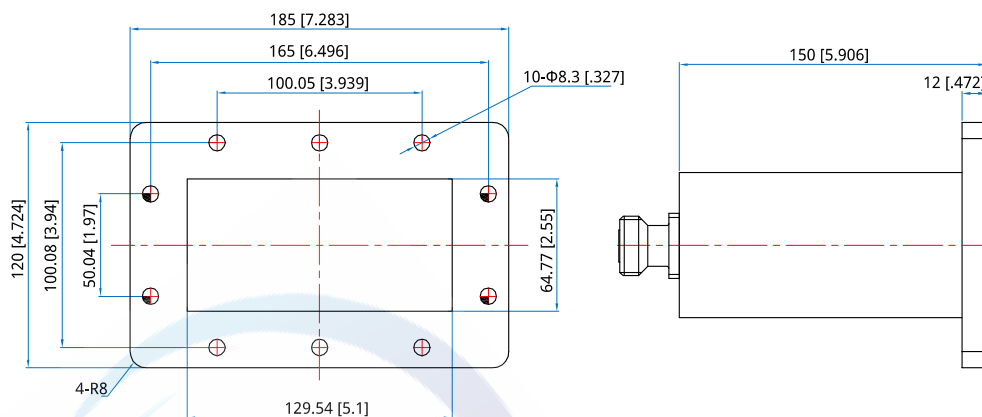
**NWCA-510-7F-E**

Customization is available upon request.

#### Mechanical

Length: 150mm  
 5.906in  
 RF Connectors: 7/16 DIN Female  
 Interface: WR-510  
 Flange: FDP18  
 Material: Aluminium

#### Outline Drawings



Unit: mm [in]

Tolerance: ±0.2mm [±0.008in]

## NWCA -510-NF -E

### WR-510 to N female, End launch

Features:  
\* Low VSWR

Applications:  
\* Wireless  
\* Transmitter  
\* Laboratory Test  
\* Radar

#### Electrical

Frequency: 1.45~2.2GHz  
VSWR: 1.2 max.  
Impedance: 50Ω

#### How To Order

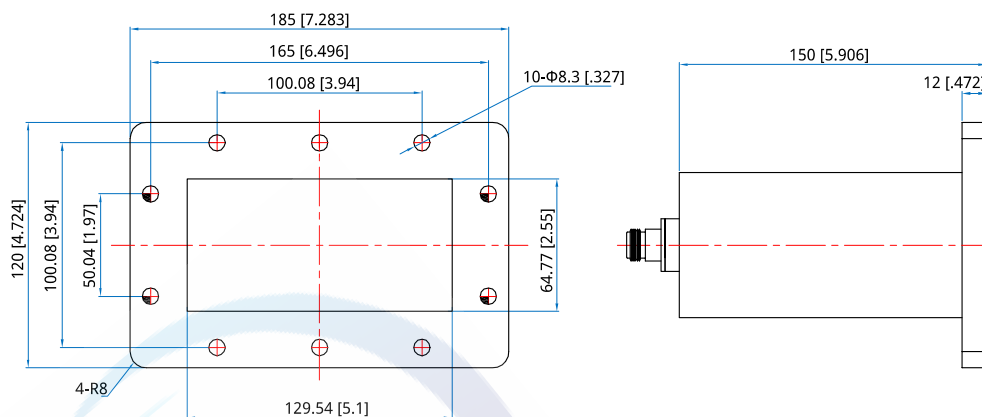
**NWCA-510-NF-E**

Customization is available upon request.

#### Mechanical

Length: 150mm  
5.906in  
RF Connectors: N Female  
Interface: WR-510  
Flange: FDP18  
Material: Aluminium

#### Outline Drawings



Unit: mm [in]

Tolerance: ±0.2mm [±0.008in]

## NWCA -510-NF -R WR-510 to N female, Right angle

Features:  
\* Low VSWR

Applications:  
\* Wireless  
\* Transmitter  
\* Laboratory Test  
\* Radar

### Electrical

Frequency: 1.45~2.2GHz  
VSWR: 1.2 max.  
Impedance: 50Ω

### How To Order

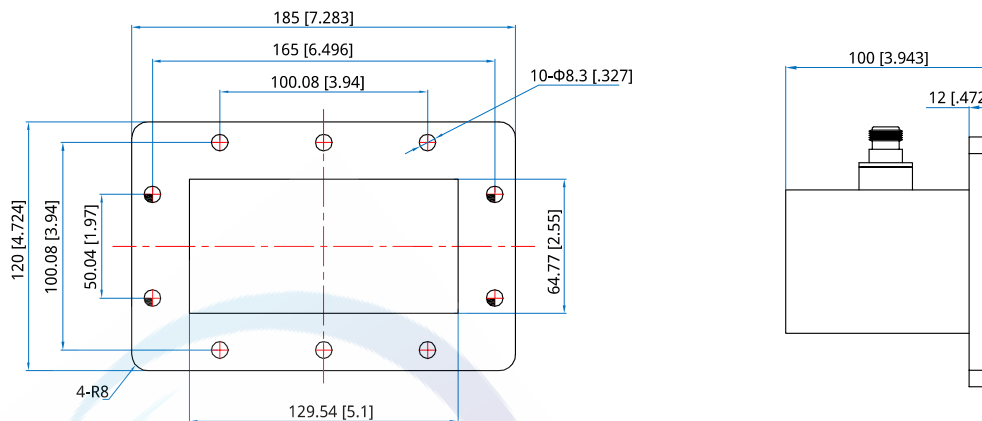
**NWCA-510-NF-R**

Customization is available upon request.

### Mechanical

Length: 100mm  
3.943in  
RF Connectors: N Female  
Interface: WR-510  
Flange: FDP18  
Material: Aluminium

### Outline Drawings



Unit: mm [in] Tolerance: ±0.2mm [±0.008in]

## NWCA -510-SF -E

### WR-510 to SMA female, End launch

Features:  
\* Low VSWR

Applications:  
\* Wireless  
\* Transmitter  
\* Laboratory Test  
\* Radar

#### Electrical

Frequency: 1.45~2.2GHz  
VSWR: 1.2 max.  
Impedance: 50Ω

#### How To Order

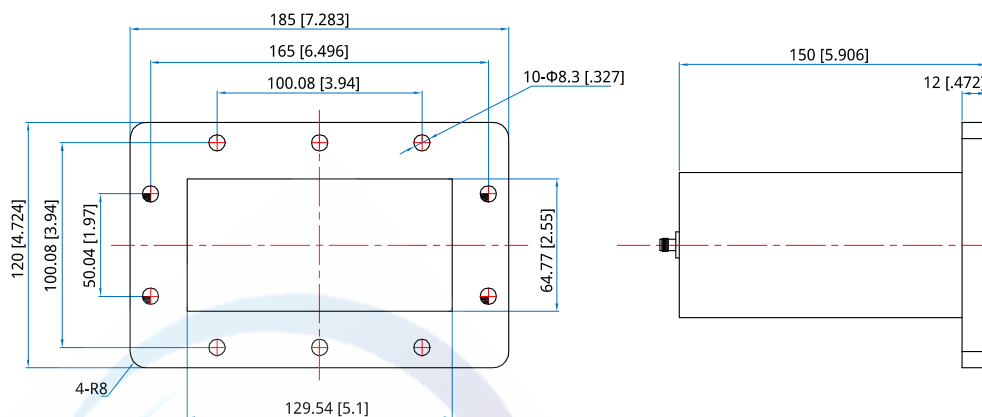
**NWCA-510-SF-E**

Customization is available upon request.

#### Mechanical

Length: 150mm  
5.906in  
RF Connectors: SMA Female  
Interface: WR-510  
Flange: FDP18  
Material: Aluminium

#### Outline Drawings



Unit: mm [in]

Tolerance: ±0.2mm [±0.008in]



## NWCA -51 -2F -E WR-51 to 2.4mm Female, End Launch

Features:  
\* Low VSWR

Applications:  
\* Wireless  
\* Transmitter  
\* Laboratory Test  
\* Radar

### Electrical

Frequency: 14.5~22GHz  
VSWR: 1.2 max.  
Impedance: 50Ω

### Mechanical

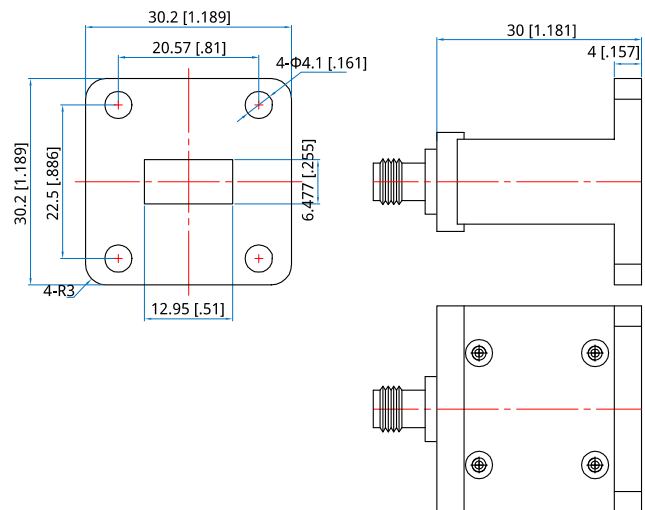
Length: 30mm  
1.181in  
RF Connectors: 2.4mm Female  
Interface: WR-51  
Flange: FBP180  
Material: Copper

### How To Order

**NWCA-51-2F-E**

Customization is available upon request.

### Outline Drawings



Unit: mm [in]

Tolerance: ±0.2mm [±0.008in]

## NWCA -51 -2F -R

### WR-51 to 2.4mm Female, Right angle

Features:  
\* Low VSWR

Applications:  
\* Wireless  
\* Transmitter  
\* Laboratory Test  
\* Radar

#### Electrical

Frequency: 14.5~22GHz  
VSWR: 1.2 max.  
Impedance: 50Ω

#### Mechanical

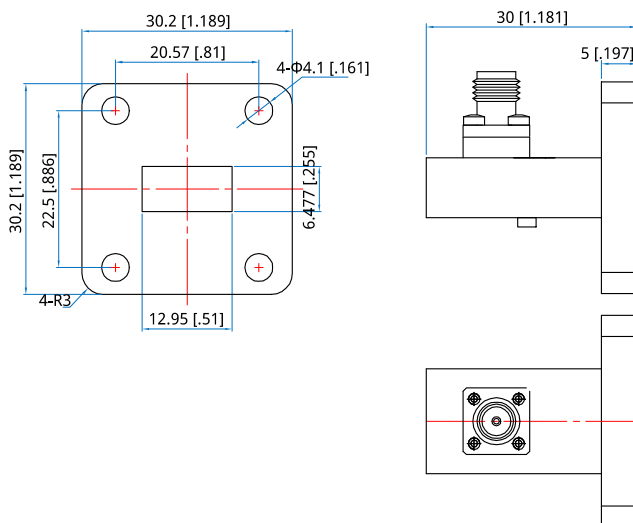
Length: 30mm  
1.181in  
RF Connectors: 2.4mm Female  
Interface: WR-51  
Flange: FBP180  
Material: Copper

#### How To Order

**NWCA-51-2F-R**

Customization is available upon request.

#### Outline Drawings



Unit: mm [in]

Tolerance: ±0.2mm [±0.008in]

## NWCA -51-? F -E

### WR-51 to 2.92mm Female, End Launch

Features:  
\* Low VSWR

Applications:  
\* Wireless  
\* Transmitter  
\* Laboratory Test  
\* Radar

#### Electrical

Frequency: 14.5~22GHz  
VSWR: 1.2 max.  
Impedance: 50Ω

#### Mechanical

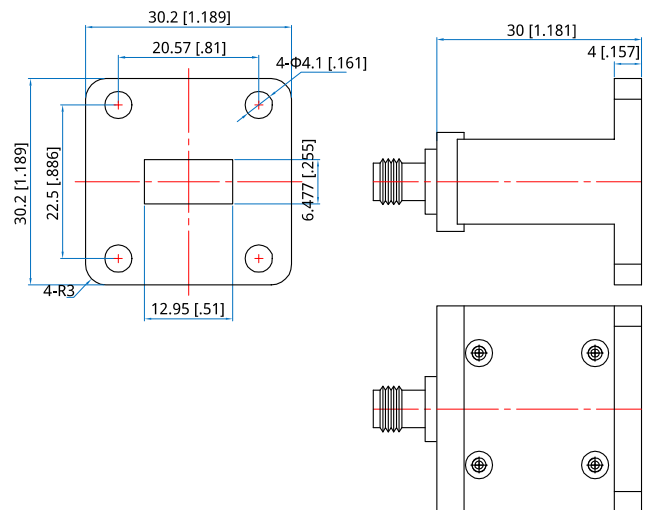
Length: 30mm  
1.181in  
RF Connectors: 2.92mm Female  
Interface: WR-51  
Flange: FBP180  
Material: Copper

#### How To Order

**NWCA-51-KF-E**

Customization is available upon request.

#### Outline Drawings



Unit: mm [in]

Tolerance: ±0.2mm [±0.008in]

## NWCA -51-? F -R

### WR-51 to 2.92mm Female, Right angle

Features:  
\* Low VSWR

Applications:  
\* Wireless  
\* Transmitter  
\* Laboratory Test  
\* Radar

#### Electrical

Frequency: 14.5~22GHz  
VSWR: 1.2 max.

#### Mechanical

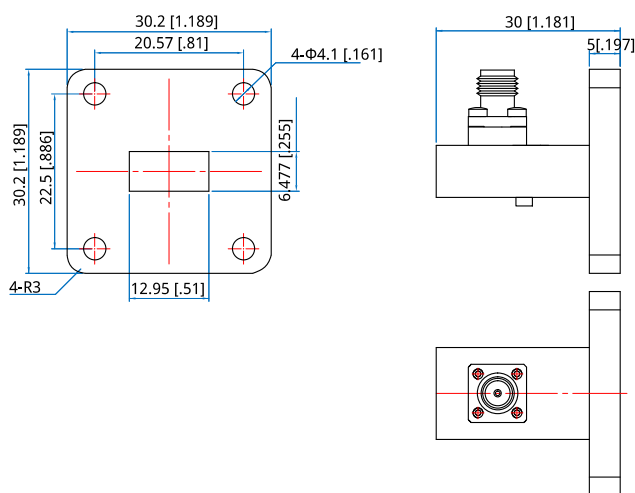
Length: 30mm  
1.181in  
RF Connectors: 2.92mm Female  
Interface: WR-51  
Flange: FBP180  
Material: Copper

#### How To Order

NWCA-51-KF-R

Customization is available upon request.

#### Outline Drawings



Unit: mm [in]  
Tolerance:  $\pm 0.2\text{mm}$  [ $\pm 0.008\text{in}$ ]

## NWCA-51-SF-R

### WR-51 to SMA Female, Right angle

Features:  
\* Low VSWR

Applications:  
\* Wireless  
\* Transmitter  
\* Laboratory Test  
\* Radar

#### Electrical

Frequency: 14.5~22GHz  
VSWR: 1.2 max.  
Impedance: 50Ω

#### Mechanical

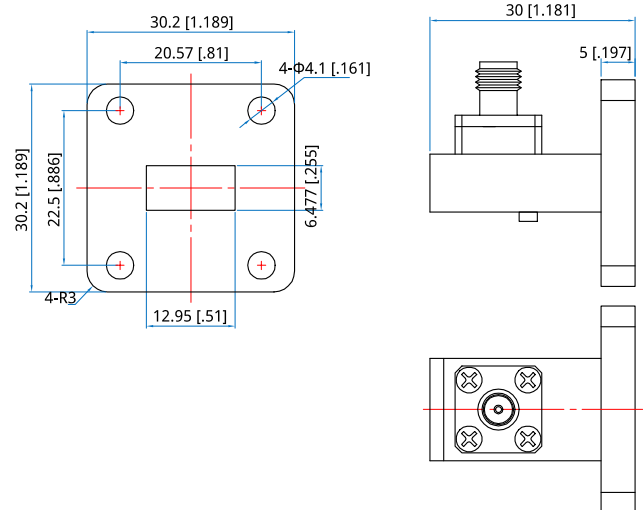
Length: 30mm  
1.181in  
RF Connectors: SMA Female  
Interface: WR-51  
Flange: FBP180  
Material: Aluminium

#### How To Order

**NWCA-51-SF-R**

Customization is available upon request.

#### Outline Drawings



Unit: mm [in]

Tolerance: ±0.2mm [±0.008in]

## NWCA -\* 2-NF -E WR-62 to N Female, End Launch

Features:  
\* Low VSWR

Applications:  
\* Wireless  
\* Transmitter  
\* Laboratory Test  
\* Radar

### Electrical

Frequency: 11.9~18GHz  
VSWR: 1.2 max.  
Impedance: 50Ω

### Mechanical

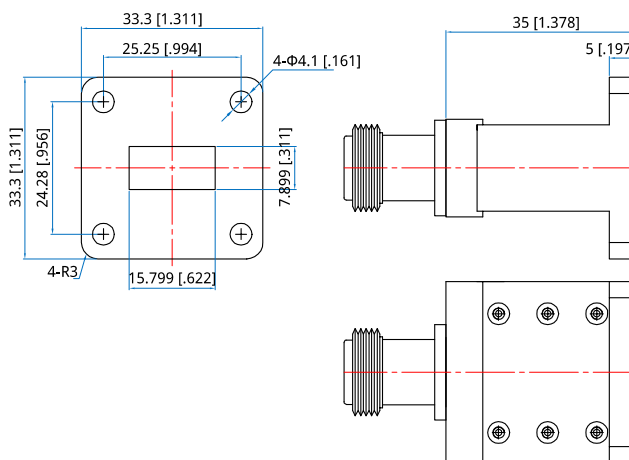
Length: 35mm  
1.378in  
RF Connectors: N Female  
Interface: WR-62  
Flange: FBP140  
Material: Aluminium

### How To Order

**NWCA-62-NF-E**

Customization is available upon request.

### Outline Drawings



Unit: mm [in]

Tolerance: ±0.2mm [±0.008in]

## NWCA -\* 2-NF -R WR-62 to N female, Right angle

Features:  
\* Low VSWR

Applications:  
\* Wireless  
\* Transmitter  
\* Laboratory Test  
\* Radar

### Electrical

Frequency: 11.9~18GHz  
VSWR: 1.2 max.  
Impedance: 50Ω

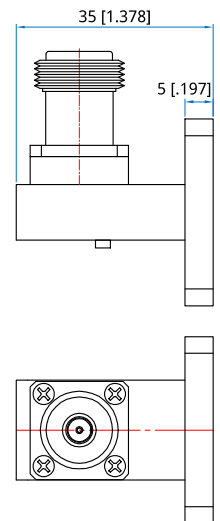
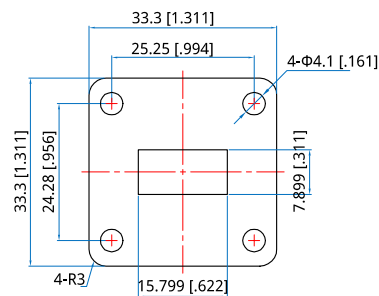
### Mechanical

Length: 35mm  
1.378in  
RF Connectors: N Female  
Interface: WR-62  
Flange: FBP140  
Material: Aluminium

### How To Order NWCA-62-NF-R

Customization is available upon request.

### Outline Drawings



Unit: mm [in]  
Tolerance: ±0.2mm [±0.008in]

## NWCA -\* 2-SF -E WR-62 to SMA Female, End Launch

Features:  
\* Low VSWR

Applications:  
\* Wireless  
\* Transmitter  
\* Laboratory Test  
\* Radar

### Electrical

Frequency: 11.9~18GHz  
VSWR: 1.2 max.  
Impedance: 50Ω

### Mechanical

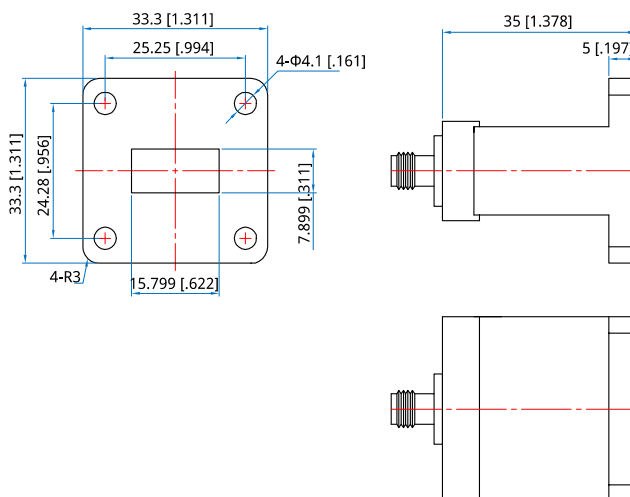
Length: 35mm  
1.378in  
RF Connectors: SMA Female  
Interface: WR-62  
Flange: FBP140  
Material: Aluminium

### How To Order

**NWCA-62-SF-E**

Customization is available upon request.

### Outline Drawings



Unit: mm [in]  
Tolerance: ±0.2mm [±0.008in]



## NWCA -\* 2-SF -R WR-62 to SMA Female, Right Angle

Features:  
\* Low VSWR

Applications:  
\* Wireless  
\* Transmitter  
\* Laboratory Test  
\* Radar

### Electrical

Frequency: 11.9~18GHz  
VSWR: 1.2 max.

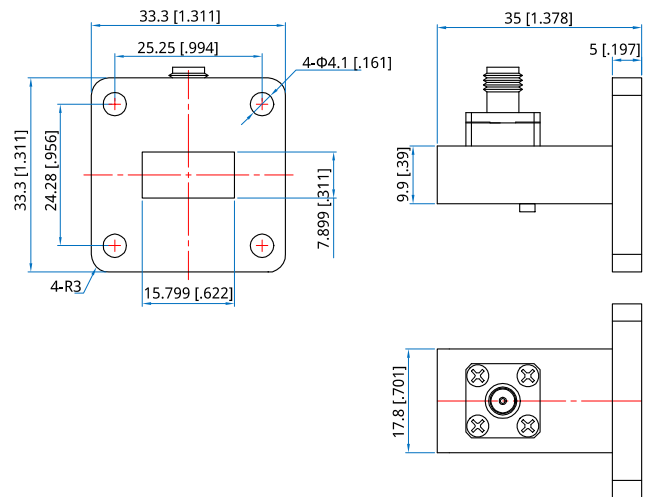
### Mechanical

Length: 35mm  
1.378in  
RF Connectors: SMA Female  
Interface: WR-62  
Flange: FBP140  
Material: Aluminum

### How To Order NWCA-62-SF-R

Customization is available upon request.

### Outline Drawings



Unit: mm [in]  
Tolerance:  $\pm 0.2\text{mm}$  [ $\pm 0.008\text{in}$ ]

## NWCA -\* 50-+F -E WR-650 to 7/16 DIN female, End launch

Features:  
\* Low VSWR

Applications:  
\* Wireless  
\* Transmitter  
\* Laboratory Test  
\* Radar

### Electrical

Frequency: 1.13~1.73GHz  
VSWR: 1.2 max.  
Impedance: 50Ω

### How To Order

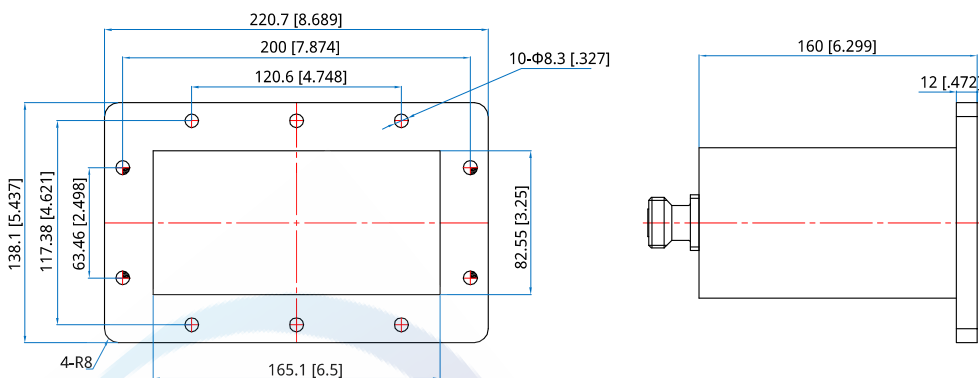
**NWCA-650-7F-E**

Customization is available upon request.

### Mechanical

Length: 160mm  
6.299in  
RF Connectors: 7/16 DIN Female  
Interface: WR-650  
Flange: FDP14  
Material: Aluminium

### Outline Drawings



Unit: mm [in]

Tolerance: ±0.2mm [±0.008in]

## NWCA -\* 50-NF -E WR-650 to N female, End launch

Features:  
\* Low VSWR

Applications:  
\* Wireless  
\* Transmitter  
\* Laboratory Test  
\* Radar

### Electrical

Frequency: 1.13~1.73GHz  
VSWR: 1.2 max.  
Impedance: 50Ω

### How To Order

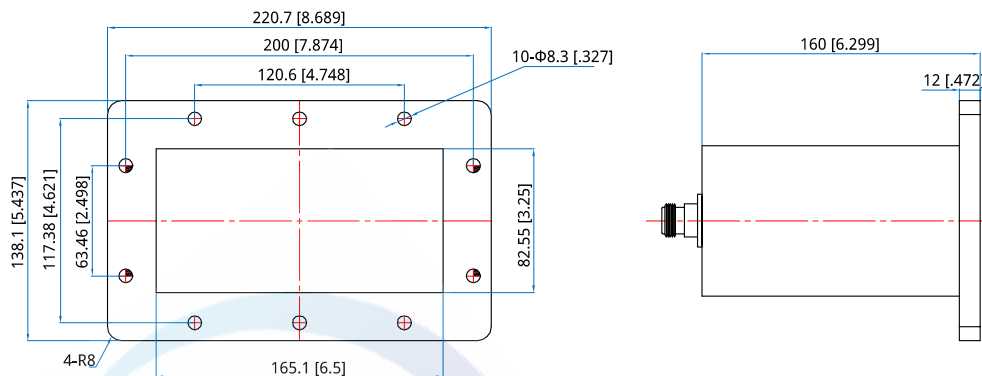
**NWCA-650-NF-E**

Customization is available upon request.

### Mechanical

Length: 160mm  
6.299in  
RF Connectors: N Female  
Interface: WR-650  
Flange: FDP14  
Material: Aluminium

### Outline Drawings



Unit: mm [in] Tolerance:  $\pm 0.2\text{mm}$  [ $\pm 0.008\text{in}$ ]

## NWCA -\* 50-NF -R WR-650 to N female, Right angle

Features:  
\* Low VSWR

Applications:  
\* Wireless  
\* Transmitter  
\* Laboratory Test  
\* Radar

### Electrical

Frequency: 1.12~1.73GHz  
VSWR: 1.2 max.  
Insertion Loss: 0.2dB max.  
Impedance: 50Ω

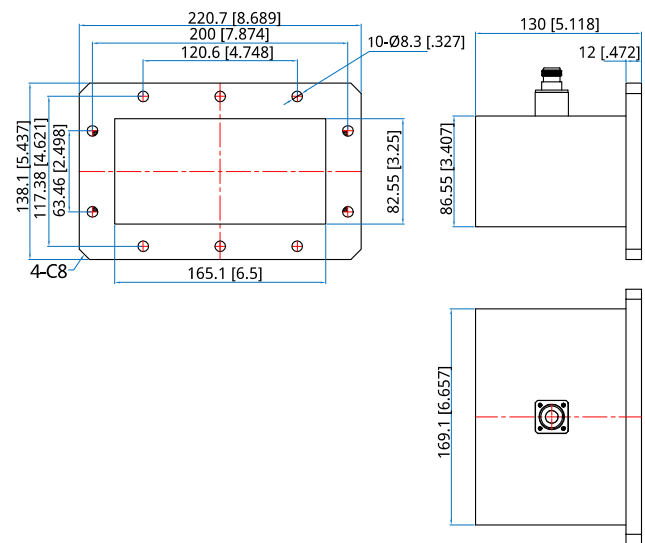
### Mechanical

Length: 130mm  
5.118in  
RF Connectors: N Female  
Interface: WR-650  
Flange: FDP14  
Material: Aluminum

### Environmental

Temperature: -20~+65°C

### Outline Drawings



Unit: mm [in]

Tolerance: ±0.2mm [±0.008in]

### How To Order

**NWCA-650-NF-R**

Customization is available upon request.

## NWCA -\* 50-SF -E WR-650 to SMA female, End launch

Features:  
\* Low VSWR

Applications:  
\* Wireless  
\* Transmitter  
\* Laboratory Test  
\* Radar

### Electrical

Frequency: 1.13~1.73GHz  
VSWR: 1.2 max.  
Impedance: 50Ω

### How To Order

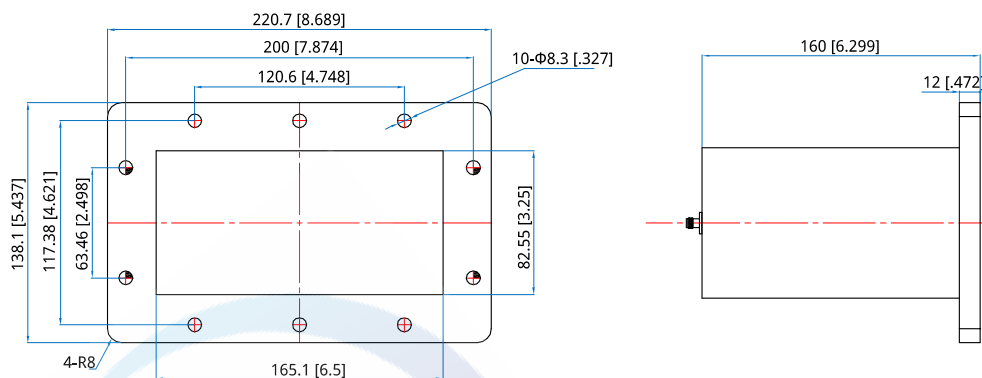
**NWCA-650-SF-E**

Customization is available upon request.

### Mechanical

Length: 160mm  
6.299in  
RF Connectors: SMA Female  
Interface: WR-650  
Flange: FDP14  
Material: Aluminium

### Outline Drawings



Unit: mm [in]

Tolerance:  $\pm 0.2\text{mm}$  [ $\pm 0.008\text{in}$ ]

## NWCA -+5-N-E WR-75 to N Male, End Launch

Features:  
\* Low VSWR

Applications:  
\* Wireless  
\* Transmitter  
\* Laboratory Test  
\* Radar

### Electrical

Frequency: 9.84~15GHz  
VSWR: 1.2 max.  
Impedance: 50Ω

### Mechanical

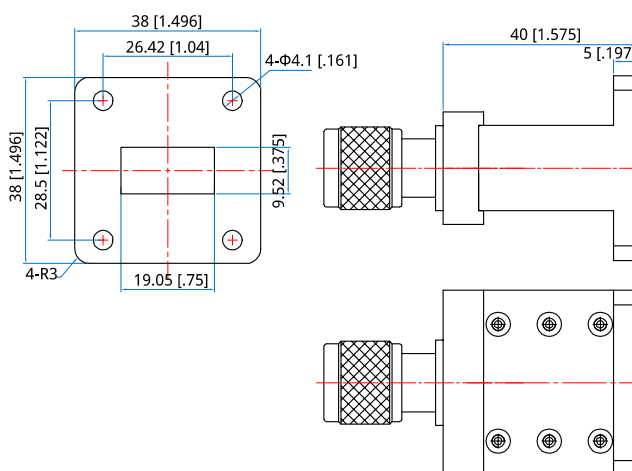
Length: 40mm  
1.575in  
RF Connectors: N male  
Interface: WR-75  
Flange: FBP120  
Material: Aluminium

### How To Order

**NWCA-75-N-E**

Customization is available upon request.

### Outline Drawings



Unit: mm [in]  
Tolerance: ±0.2mm [±0.008in]

## NWCA-+5-NF-E WR-75 to N Female, End Launch

Features:  
\* Low VSWR

Applications:  
\* Wireless  
\* Transmitter  
\* Laboratory Test  
\* Radar

### Electrical

Frequency: 9.84~15GHz  
VSWR: 1.2 max.  
Impedance: 50Ω

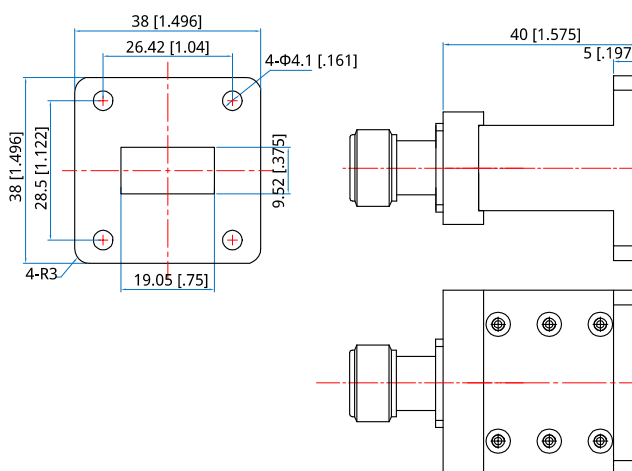
### Mechanical

Length: 40mm  
1.575in  
RF Connectors: N female  
Interface: WR-75  
Flange: FBP120  
Material: Aluminium

### How To Order NWCA-75-NF-E

Customization is available upon request.

### Outline Drawings



Unit: mm [in]  
Tolerance: ±0.2mm [±0.008in]

## NWCA -+5-NF -R WR-75 to N female, Right angle

Features:  
\* Low VSWR

Applications:  
\* Wireless  
\* Transmitter  
\* Laboratory Test  
\* Radar

### Electrical

Frequency: 9.84~15GHz  
VSWR: 1.2 max.  
Impedance: 50Ω

### Mechanical

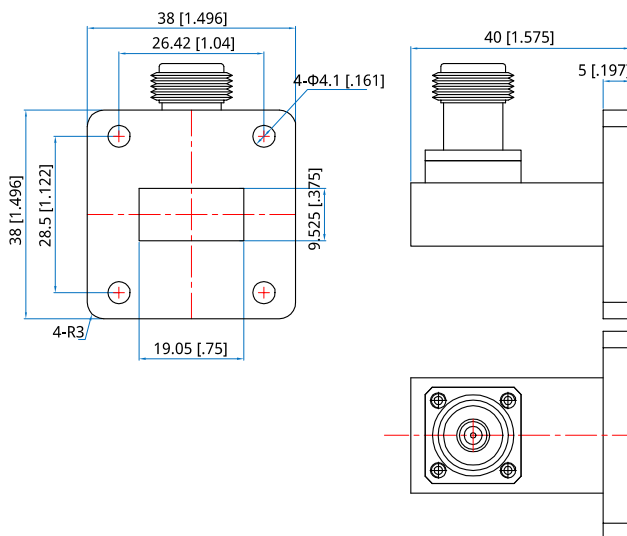
Length: 40mm  
1.575in  
RF Connectors: N Female  
Interface: WR-75  
Flange: FBP120  
Material: Aluminium

### How To Order

**NWCA-75-NF-R**

Customization is available upon request.

### Outline Drawings



Unit: mm [in]

Tolerance: ±0.2mm [±0.008in]



## NWCA -+5-SF -E WR-75 to SMA Female, End Launch

Features:  
\* Low VSWR

Applications:  
\* Wireless  
\* Transmitter  
\* Laboratory Test  
\* Radar

### Electrical

Frequency: 9.84~15GHz  
VSWR: 1.2 max.

### Mechanical

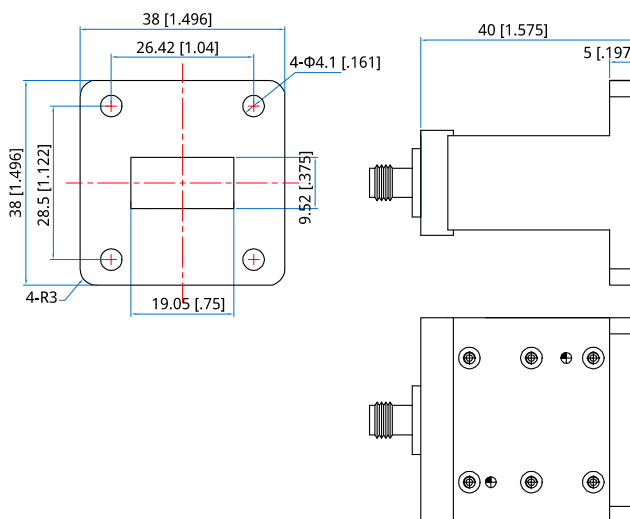
Length: 40mm  
1.575in  
RF Connectors: SMA Female  
Interface: WR-75  
Flange: FBP120  
Material: Aluminium

### How To Order

**NWCA-75-SF-E**

Customization is available upon request.

### Outline Drawings



Unit: mm [in]  
Tolerance:  $\pm 0.2\text{mm}$  [ $\pm 0.008\text{in}$ ]

## NWCA -+5-SF -R WR-75 to SMA Female, Right Angle

Features:  
\* Low VSWR

Applications:  
\* Wireless  
\* Transmitter  
\* Laboratory Test  
\* Radar

### Electrical

Frequency: 9.84~15GHz  
VSWR: 1.2 max.  
Impedance: 50Ω

### Mechanical

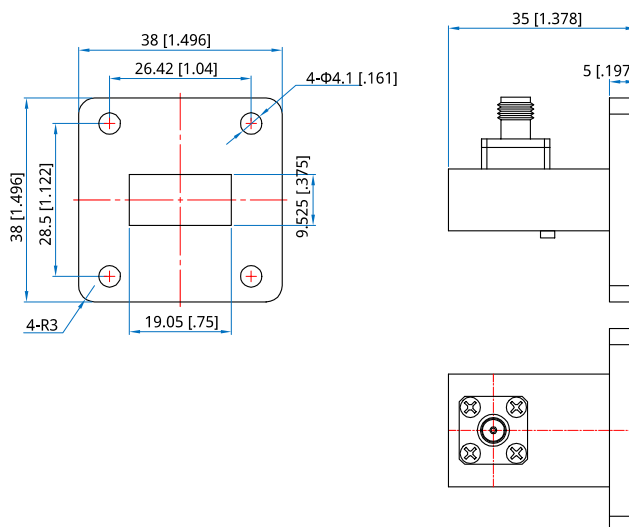
Length: 35mm  
1.378in  
RF Connectors: SMA Female  
Interface: WR-75  
Flange: FBP120  
Material: Aluminium

### How To Order

**NWCA-75-SF-R**

Customization is available upon request.

### Outline Drawings



Unit: mm [in]

Tolerance: ±0.2mm [±0.008in]

## NWCA -++O-NF -R WR-770 to N female, Right angle

Features:  
\* Low VSWR

Applications:  
\* Wireless  
\* Transmitter  
\* Laboratory Test  
\* Radar

### Electrical

Frequency: 0.96~1.46GHz  
VSWR: 1.2 max.  
Impedance: 50Ω

### How To Order

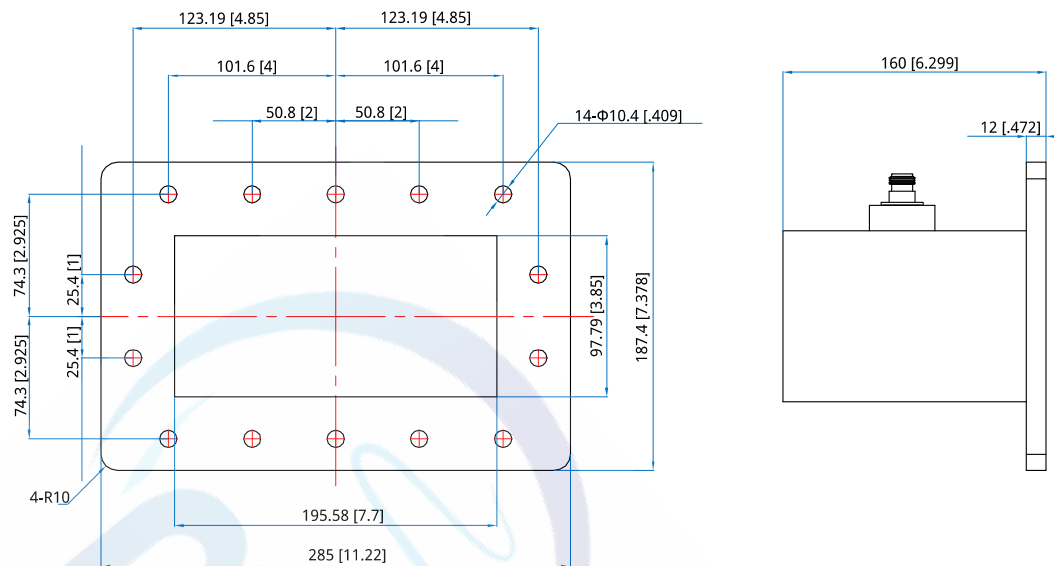
**NWCA-770-NF-R**

Customization is available upon request.

### Mechanical

Length: 160mm  
6.299in  
RF Connectors: N Female  
Interface: WR-770  
Flange: FDP12  
Material: Aluminium

### Outline Drawings



Unit: mm [in] Tolerance: ±0.2mm [±0.008in]

## NWCA -- O-? F -R

### WR-90 to 2.92mm female, Right angle

#### Features:

- \* Low VSWR

#### Applications:

- \* Wireless
- \* Transmitter
- \* Laboratory Test
- \* Radar

#### Electrical

Frequency:	8.2~12.5GHz
VSWR:	1.2 max.
Impedance:	50Ω

#### Mechanical

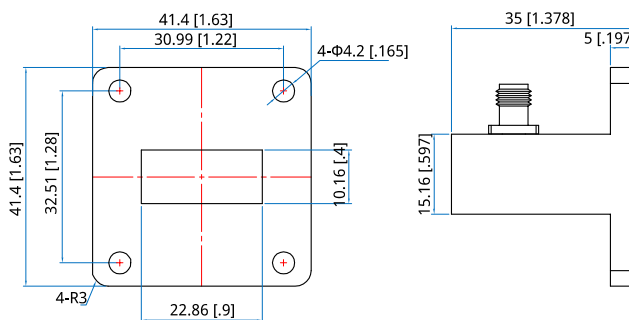
Length:	35mm
	1.378in
RF Connectors:	2.92mm Female
Interface:	WR-90
Flange:	FBP100
Material:	Aluminium

#### How To Order

**NWCA-90-KF-R**

Customization is available upon request.

#### Outline Drawings



Unit: mm [in]

Tolerance: ±0.2mm [±0.008in]

## NWCA -- O-NF -E WR-90 to N female, End launch

Features:  
\* Low VSWR

Applications:  
\* Wireless  
\* Transmitter  
\* Laboratory Test  
\* Radar

### Electrical

Frequency: 8.2~12.5GHz  
VSWR: 1.2 max.  
Impedance: 50Ω

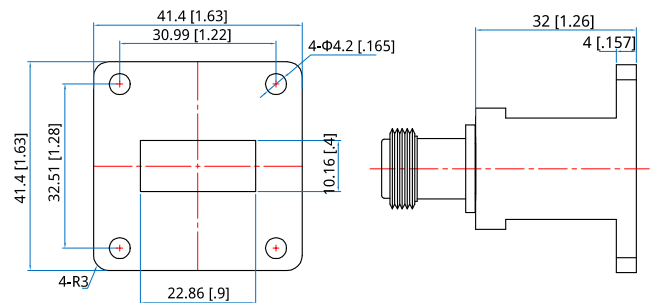
### Mechanical

Length: 32mm  
1.26in  
RF Connectors: N Female  
Interface: WR-90  
Flange: FBP100  
Material: Aluminium

### How To Order NWCA-90-NF-E

Customization is available upon request.

### Outline Drawings



Unit: mm [in]

Tolerance: ±0.2mm [±0.008in]

## NWCA -- O-NF -R WR-90 to N female, Right angle

Features:  
\* Low VSWR

Applications:  
\* Wireless  
\* Transmitter  
\* Laboratory Test  
\* Radar

### Electrical

Frequency: 8.2~12.5GHz  
VSWR: 1.2 max.  
Impedance: 50Ω

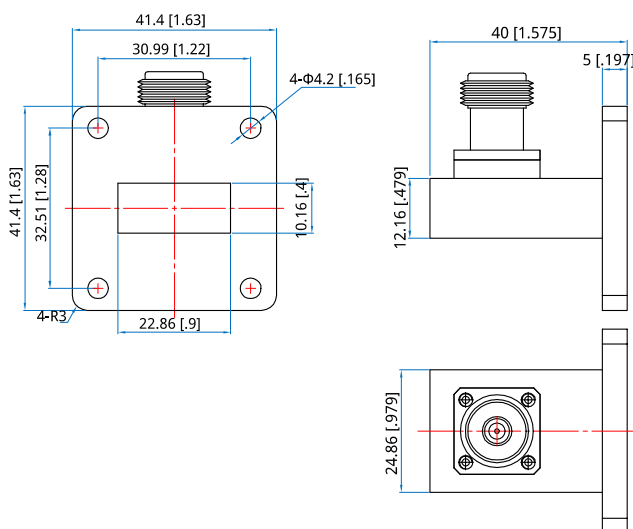
### Mechanical

Length: 40mm  
1.575in  
RF Connectors: N Female  
Interface: WR-90  
Flange: FBP100  
Material: Aluminium

### How To Order NWCA-90-NF-R

Customization is available upon request.

### Outline Drawings



Unit: mm [in]

Tolerance: ±0.2mm [±0.008in]

## NWCA -- O-SF -E WR-90 to SMA Female, End Launch

Features:  
\* Low VSWR

Applications:  
\* Wireless  
\* Transmitter  
\* Laboratory Test  
\* Radar

### Electrical

Frequency: 8.2~12.5GHz  
VSWR: 1.2 max.

### Mechanical

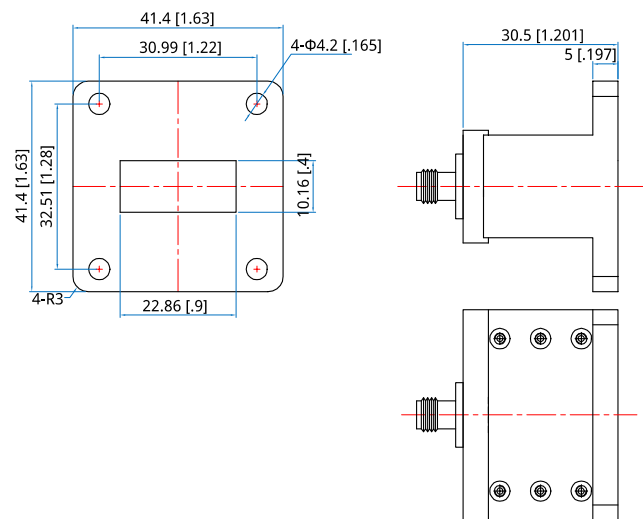
Length: 30.5mm  
1.201in  
RF Connectors: SMA Female  
Interface: WR-90  
Flange: FBP100  
Material: Aluminum

### How To Order

**NWCA-90-SF-E**

Customization is available upon request.

### Outline Drawings



Unit: mm [in]  
Tolerance:  $\pm 0.2$ mm [ $\pm 0.008$ in]

## NWCA -- O-SF -R

### WR-90 to SMA Female, Right Angle

Features:  
\* Low VSWR

Applications:  
\* Wireless  
\* Transmitter  
\* Laboratory Test  
\* Radar

#### Electrical

Frequency: 8.2~12.5GHz  
VSWR: 1.2 max.

#### Mechanical

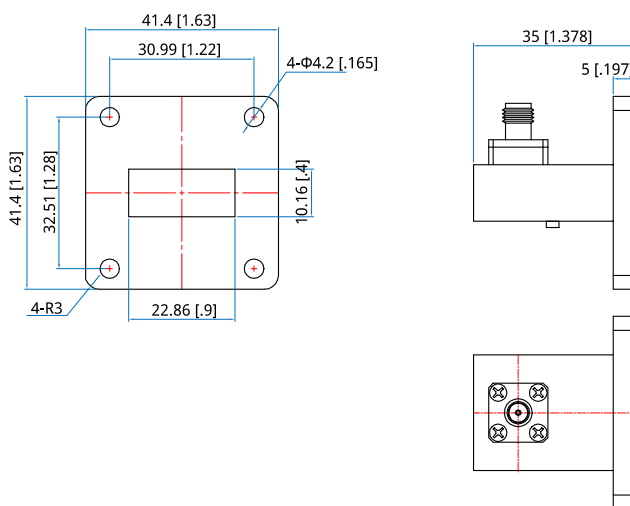
Length: 35mm  
1.378in  
RF Connectors: SMA Female  
Interface: WR-90  
Flange: FBP100  
Material: Aluminum

#### How To Order

**NWCA-90-SF-R**

Customization is available upon request.

#### Outline Drawings



Unit: mm [in]

Tolerance: ±0.2mm [±0.008in]



## NWCA -- +5--F -R WR-975 to 7/16 DIN female, Right angle

Features:  
\* Low VSWR

Applications:  
\* Wireless  
\* Transmitter  
\* Laboratory Test  
\* Radar

### Electrical

Frequency: 0.76~1.15GHz  
VSWR: 1.2 max.  
Impedance: 50Ω

### How To Order

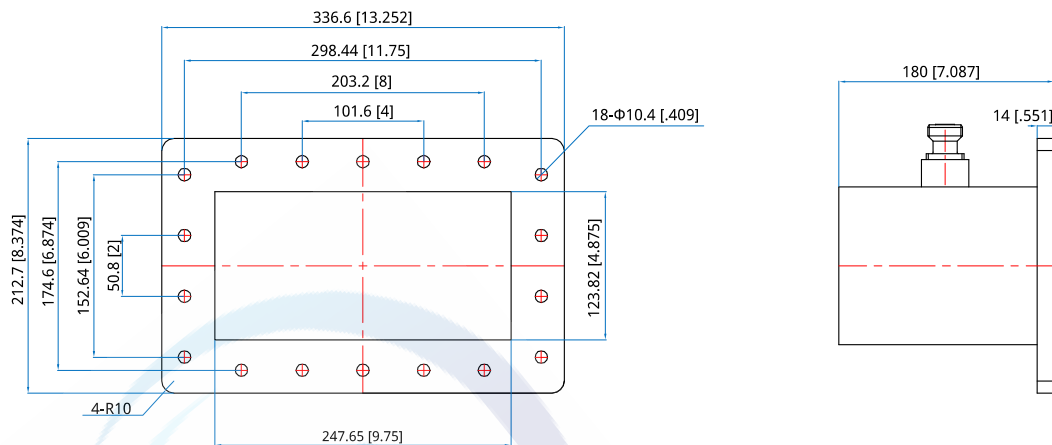
**NWCA-975-7F-R**

Customization is available upon request.

### Mechanical

Length: 180mm  
7.087in  
RF Connectors: 7/16 DIN Female  
Interface: WR-975  
Flange: FDP9  
Material: Aluminium

### Outline Drawings



Unit: mm [in]      Tolerance: ±0.2mm [±0.008in]

## NWCA -- +5-NF -R WR-975 to N female, Right angle

Features:  
\* Low VSWR

Applications:  
\* Wireless  
\* Transmitter  
\* Laboratory Test  
\* Radar

### Electrical

Frequency: 0.76~1.15GHz  
VSWR: 1.2 max.  
Impedance: 50Ω

### How To Order

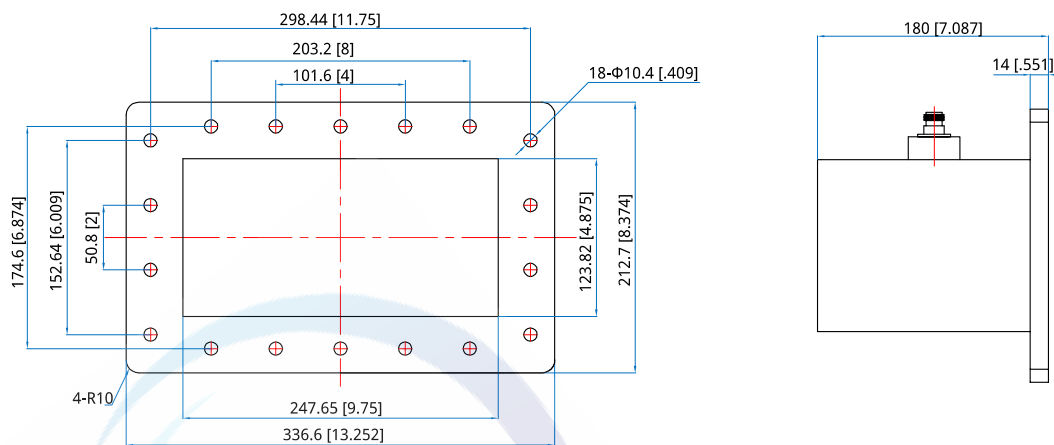
**NWCA-975-NF-R**

Customization is available upon request.

### Mechanical

Length: 180mm  
7.087in  
RF Connectors: N Female  
Interface: WR-975  
Flange: FDP9  
Material: Aluminium

### Outline Drawings



Unit: mm [in]

Tolerance: ±0.2mm [±0.008in]

## NWCA -8' 50-NF -R WRD-350 to N Female, Right angle

Features:  
\* Low VSWR

Applications:  
\* Wireless  
\* Transmitter  
\* Laboratory Test  
\* Radar

### Electrical

Frequency: 4-8GHz  
VSWR: 1.3 max.  
Impedance: 50Ω

### Mechanical

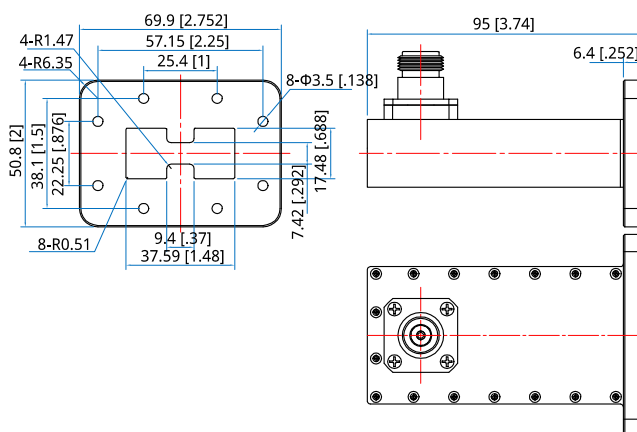
Length: 95mm  
3.74in  
RF Connectors: N female  
Interface: WRD-350  
Flange: FPWRD350  
Material: Aluminium

### How To Order

**NWCA-D350-NF-R**

Customization is available upon request.

### Outline Drawings



Unit: mm [in]

Tolerance: ±0.2mm [±0.008in]

## NWCA -8( +5-NF -R WRD-475 to N Female, Right angle

Features:  
\* Low VSWR

Applications:  
\* Wireless  
\* Transmitter  
\* Laboratory Test  
\* Radar

### Electrical

Frequency: 4.75~11GHz  
VSWR: 1.3 max.  
Impedance: 50Ω

### Mechanical

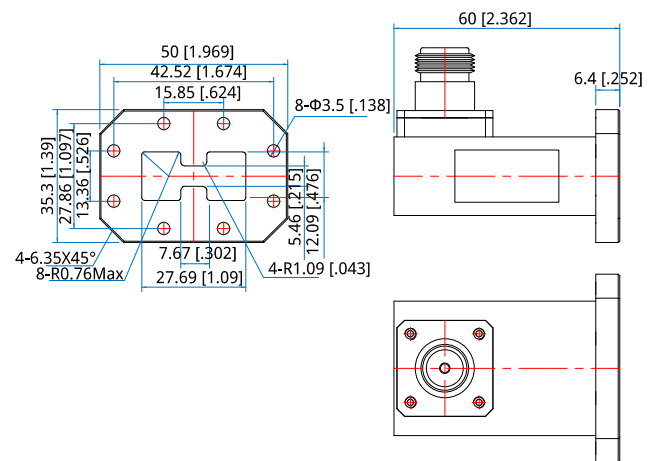
Length: 60mm  
2.362in  
RF Connectors: N female  
Interface: WRD-475  
Flange: FMWRD475D24  
Material: Aluminium

### How To Order

**NWCA-D475-NF-R**

Customization is available upon request.

### Outline Drawings



Unit: mm [in]

Tolerance: ±0.2mm [±0.008in]

## NWCA-85, O-SF-R WRD-580 to SMA Female, Right angle

Features:  
\* Low VSWR

Applications:  
\* Wireless  
\* Transmitter  
\* Laboratory Test  
\* Radar

### Electrical

Frequency: 5.8~16GHz  
VSWR: 1.3 max.  
Impedance: 50Ω

### Mechanical

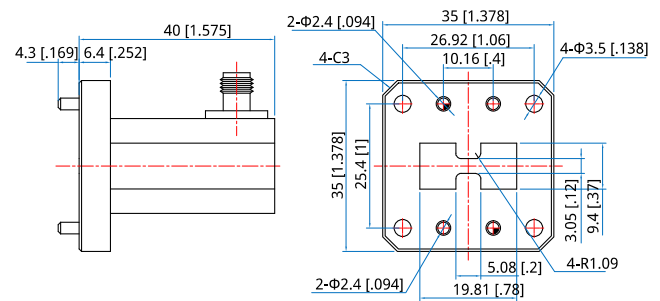
Length: 40mm  
1.575in  
RF Connectors: SMA female  
Interface: WRD-580  
Flange: FPWRD580  
Material: Aluminium

### How To Order

**NWCA-D580-SF-R**

Customization is available upon request.

### Outline Drawings



Unit: mm [in]

Tolerance: ±0.2mm [±0.008in]

## NWCA -8 \* 50-NF -R WRD-650 to N Female, Right angle

Features:  
\* Low VSWR

Applications:  
\* Wireless  
\* Transmitter  
\* Laboratory Test  
\* Radar

### Electrical

Frequency: 6.5~18GHz  
VSWR: 1.3 max.  
Impedance: 50Ω

### Mechanical

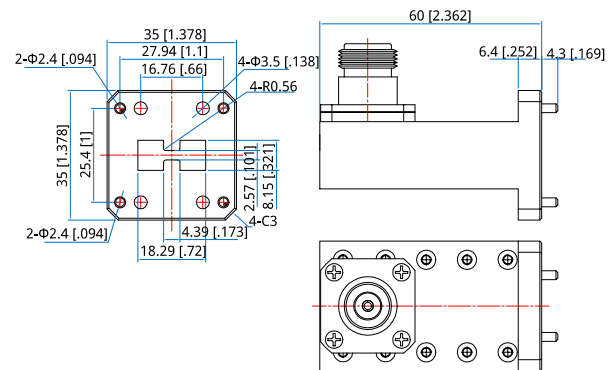
Length: 60mm  
2.362in  
RF Connectors: N female  
Interface: WRD-650  
Flange: FPWRD650  
Material: Aluminium

### How To Order

**NWCA-D650-NF-R**

Customization is available upon request.

### Outline Drawings



Unit: mm [in]

Tolerance: ±0.2mm [±0.008in]

NWCA -8 \* 50-SF -E  
WRD-650 to SMA Female, End Launch

### Features:

\* Low VSWR

Applications:

- \* Wireless
- \* Transmitter
- \* Laboratory Test
- \* Radar

## Electrical

Frequency:	6.5~18GHz
VSWR:	1.3 max.
Impedance:	50Ω

## Mechanical

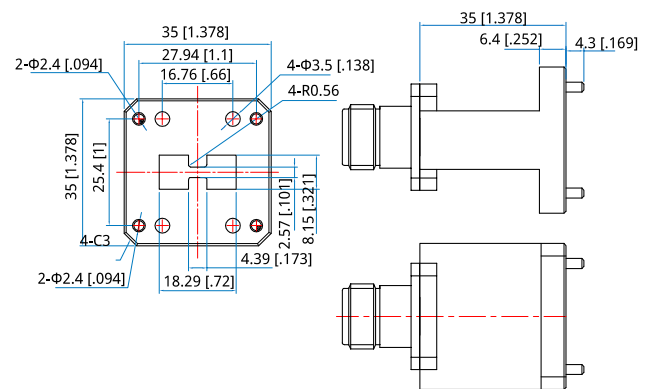
Length:	35mm
	1.378in
RF Connectors:	SMA Female
Interface:	WRD-650
Flange:	FPWRD650
Material:	Aluminium

## How To Order

NWCA-D650-SF-E

Customization is available upon request.

## Outline Drawings



Unit: mm [in]

Tolerance:  $\pm 0.2\text{mm}$  [ $\pm 0.008\text{in}$ ]

## NWCA -8 \* 50-SF -R WRD-650 to SMA Female, Right angle

Features:  
\* Low VSWR

Applications:  
\* Wireless  
\* Transmitter  
\* Laboratory Test  
\* Radar

### Electrical

Frequency: 6.5~18GHz  
VSWR: 1.3 max.  
Impedance: 50Ω

### Mechanical

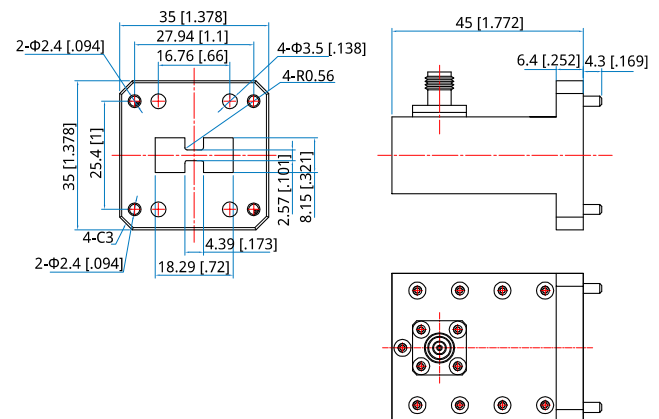
Length: 45mm  
1.772in  
RF Connectors: SMA female  
Interface: WRD-650  
Flange: FPWRD650  
Material: Aluminium

### How To Order

**NWCA-D650-SF-R**

Customization is available upon request.

### Outline Drawings



Unit: mm [in]

Tolerance: ±0.2mm [±0.008in]



## NWCA -8 +50-NF -E WRD-750 to N Female, End Launch

Features:  
\* Low VSWR

Applications:  
\* Wireless  
\* Transmitter  
\* Laboratory Test  
\* Radar

### Electrical

Frequency: 7.5~18GHz  
VSWR: 1.3 max.  
Impedance: 50Ω

### Mechanical

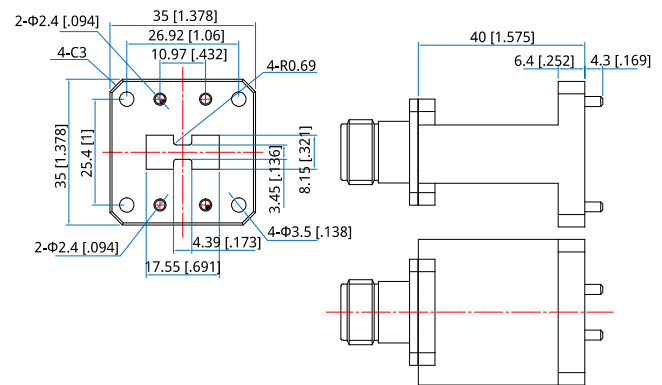
Length: 40mm  
1.575in  
RF Connectors: N Female  
Interface: WRD-750  
Flange: FPWRD750  
Material: Aluminium

### How To Order

**NWCA-D750-NF-E**

Customization is available upon request.

### Outline Drawings



Unit: mm [in]

Tolerance: ±0.2mm [±0.008in]

## NWCA -8 +50-NF -R WRD-750 to N Female, Right angle

Features:  
\* Low VSWR

Applications:  
\* Wireless  
\* Transmitter  
\* Laboratory Test  
\* Radar

### Electrical

Frequency: 7.5~18GHz  
VSWR: 1.3 max.  
Impedance: 50Ω

### Mechanical

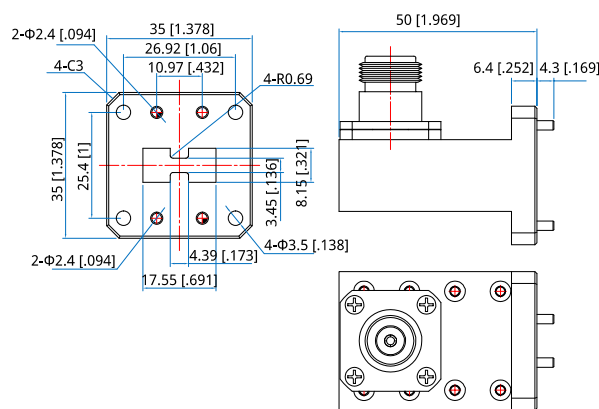
Length: 50mm  
1.969in  
RF Connectors: N female  
Interface: WRD-750  
Flange: FPWRD750  
Material: Aluminium

### How To Order

**NWCA-D750-NF-R**

Customization is available upon request.

### Outline Drawings



Unit: mm [in]

Tolerance: ±0.2mm [±0.008in]

## NWCA -8, ( O-NF -R WRD-840 to N Female, Right angle

Features:  
\* Low VSWR

Applications:  
\* Wireless  
\* Transmitter  
\* Laboratory Test  
\* Radar

### Electrical

Frequency: 0.8~2GHz  
VSWR: 1.3 max.  
Impedance: 50Ω

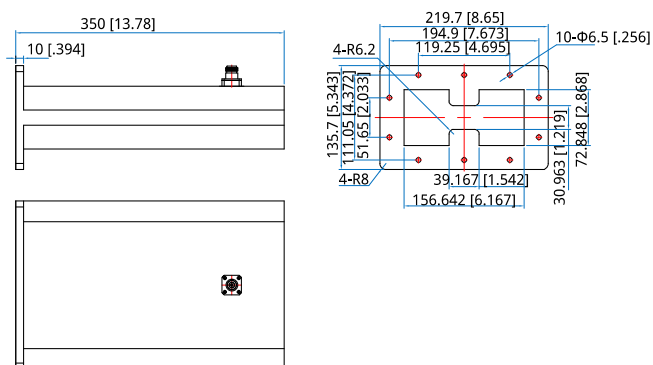
### Mechanical

Length: 350mm  
13.78in  
RF Connectors: N female  
Interface: WRD-840  
Material: Aluminium

### How To Order

**NWCA-D840-NF-R**

Customization is available upon request.



Unit: mm [in]

Tolerance: ±0.2mm [±0.008in]

### Outline Drawings